

Outline of Endoscopic Solutions Division (ESD)

In the ESD, we contribute to the medical field with a variety of products and services, including endoscope systems, scopes (flexible and rigid), and medical services.

GI Endoscopy

A group of products for inserting endoscopes into the digestive organs through natural orifices (mouth, nose, anus) for observation and diagnosis

Gastrointestinal endoscopy systems



Gastrointestinal endoscopy systems

Flexible endoscopes

Suitable for examination and treatment of internal organs by utilizing the flexibility of the insertion tube and distal end to insert the scope through the mouth or nose, for example



Reprocessing



Endoscope reprocessors

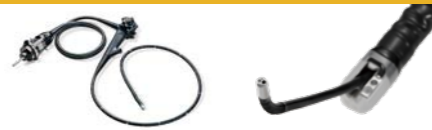
Please refer to page 56 of the Integrated Report 2023 for details.

Esophagus/Stomach



Gastrointestinal videoscope: Inserted through mouth/nose

Duodenum/Biliary tract



Duodenovideoscope/Cholangioscope: Inserted through mouth

Small intestine



Small intestinal videoscope: Inserted through mouth/anus

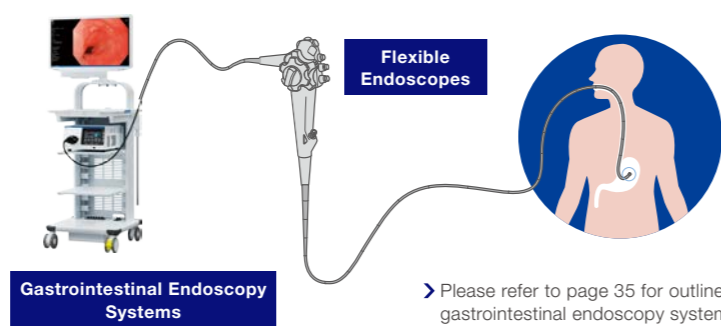
Large intestine



Colonovideoscope: Inserted through anus

Please refer to pages 25 and 29 for details of the devices.

Example of Endoscopic Examination



Please refer to page 35 for outline of gastrointestinal endoscopy system

Surgical Endoscopy

Endoscopy products that are mainly inserting into the abdominal cavity through a small hole on the body surface to check the condition of the inside body during surgical operations and microscope system

Surgical endoscopy systems



Surgical endoscopy systems

Rigid endoscopes

Suitable for laparoscopic surgical procedures, such as laparoscopy and cystoscopy, using a rigid endoscope made from a lens contained in a metal tube



Customer Solutions (Digital Healthcare Solutions)



Customer solutions virtual collaboration

Brain



Ventricular endoscope Neurological endoscope

Peripheral, Abdominal and Thoracic



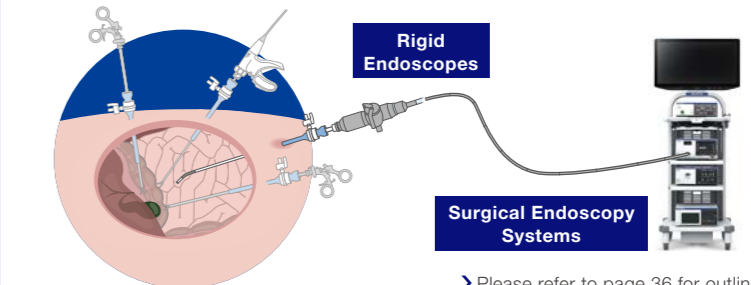
Laparoscope/Thoracoscope Rigid endoscope

Joint



Arthroscope

Example of Laparoscopic Surgery



Please refer to page 36 for outline of surgical endoscopy system

Medical Service

General repairs and service contracts for endoscopy system

General repairs

- Repair services through repair bases worldwide
- Repair services at facilities through field services (stationary equipment such as reprocessors)

Service contracts

- Single-year or multi-year contracts
- Partial or complete repair cost coverage
- Priority provision of loaners during repair of defective products
- Provision of failure prevention training
- Provision of comprehensive services



Repair center

Outline of Therapeutic Solutions Division (TSD)

Our portfolio in the TSD includes a wide range of endotherapy devices, endoscopes, and therapeutic devices for urology, respiratory, ENT, gynecology, and surgical energy devices. The various products are helping to prevent, diagnose, and treat diseases.

GI EndoTherapy

A group of products that are inserted into the instrument channel of flexible endoscopes and used for various endoscopic procedures. They can be used for tissue sampling, lesion removal, and hemostasis without making incisions or small holes on the patient's body surface.

Endotherapy devices

Tissue sampling for diagnosis



Biopsy forceps

Resection of the lesion, Hemostasis

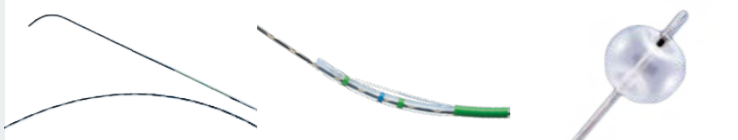


Electrosurgical snare

Electrosurgical knife

Hemostasis clip

Stone removal, Bile drainage



Guidewire

Papillotome

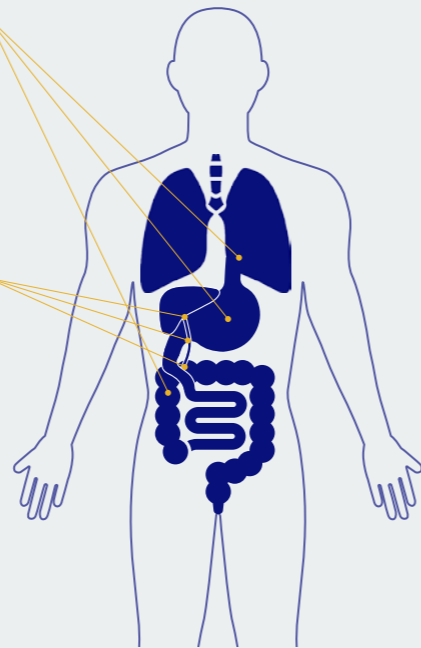
Stone extraction balloon



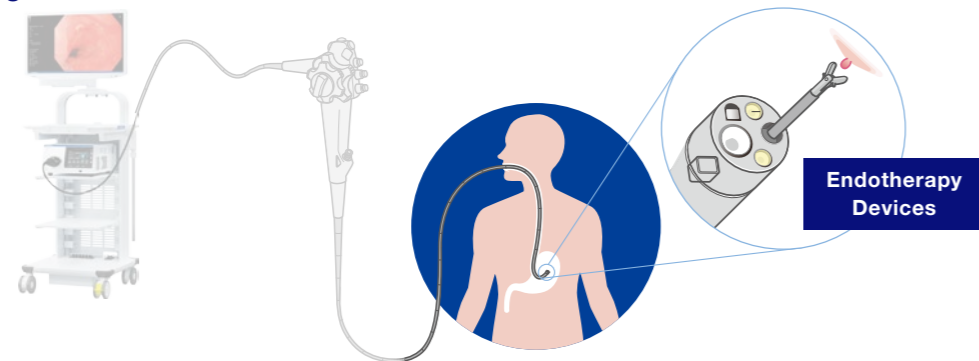
Stone retrieval basket

Plastic stent

➤ Please refer to pages 26-30 for details of the devices.



⟨Main usage scenes⟩ Examples of Endoscopic Examination



Urology

A group of urology products for observing, diagnosing and treating the urethra, prostate, bladder, ureter and kidneys by inserting endoscopes transurethally or percutaneously. Also, a group of gynecology products for observation, diagnosis, and treating the uterus by inserting endoscopes and instruments transvaginally.

Scopes

Urinary system



Ureteroscope/
Cystovideoscope

Rigid cystoscope

Uterus



Resectoscope



➤ Please refer to pages 31-32 for details of the devices.

Therapeutic devices

Urinary system



Plasma resection for
BPH and NMIBC*

Minimally invasive
treatment device for BPH

Thulium fiber
laser system

*Non-Muscle-Invasive Bladder Cancer

Respiratory

A portfolio of flexible endoscopes and single-use devices to visualize, diagnose and treat diseases in the tracheobronchial tree.

Scopes

Tracheobronchial tree



Bronchovideoscope

Endotherapy devices

Tracheobronchial tree



Biopsy forceps

Endobronchial valve



➤ Please refer to pages 32-33 for details of the devices.

Other Therapeutic Areas

ENT

A group of products for observation, diagnosis, and treating the nasal cavity, oral cavity, pharynx, larynx, and ears by inserting endoscopes through the nose, mouth, and ears.

➤ Please refer to pages 34 for details of the devices.

Scopes

Ear, Nose, and Throat



Rhino-Laryngo videoscope Rigid scope

Therapeutic devices

Ear, Nose, and Throat



Debrider

Surgical Devices

Broad offering of energy-based devices that enable laparoscopic and open surgical procedures by providing tissue grasping, manipulation, dissection, coagulation & vascular control.

➤ Please refer to pages 37 for details of the devices.

Surgical energy devices

Peripheral, Abdominal and Thoracic



Surgical tissue management system