

Communication through the Corporate Social Responsibility Report

History of Corporate Social Responsibility Reporting by the Olympus Group

Olympus first published the Olympus Environmental Report in 2000 as a means of communicating its approach toward the environment to the general public. In 2003 we started publishing a Chinese version of our report in addition to the Japanese and English versions, to enable us to address an even greater number of readers around the world. In FY2005 the title was changed to the Corporate Social Responsibility Report to reflect the expanded content that now includes a range of social aspects. We issued 18,000 copies of the Japanese version, 3,000 of the English version, and 2,000 of the Chinese version in FY2006.

Questionnaire on the Olympus Corporate Social Responsibility Report 2006

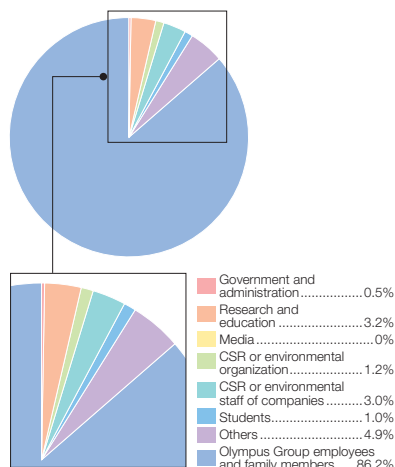
We would like to thank readers of the Corporate Social Responsibility Report 2006 for their comments and opinions. Those comments have been incorporated in the CSR Report 2007. Selected feedback is shown below.

Recommendations for Improvement by Readers of Olympus CSR Report 2006

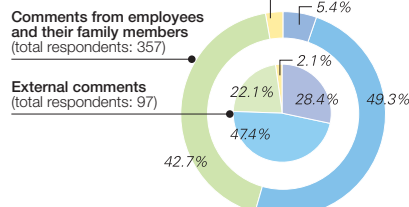
Recommendations for improvement

- There are too many pages, making the important measures and policies unclear.
- Design is flat, too many characters.
- More drawings, pictures and graphs will make the report more understandable
- Changes across years and changing trends of environmental burden cannot easily be described in the form of a brochure.
- If the website is also used to disseminate information, the site should be made available at the same time as the report.

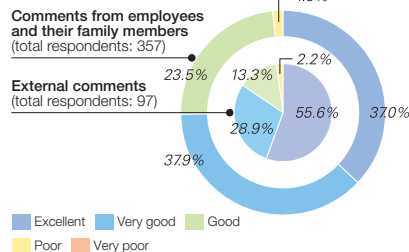
In what social capacity did you read the report?



Understandability of the Report



Details of Our Activities



Incorporation in the Olympus CSR Report 2007

- In this report important measures and challenges are reported, while other more detailed information is placed on the website. This has reduced the number of pages of the report by about half (from 60 to 32 pages).
- Different colors are used for each theme to make the entire report more understandable.
- With the reduced amount of text, we have redesigned the report, utilizing space and incorporating as many drawings, pictures, and graphs as possible.
- Explanation on changes across the years and changing trends in the environmental burden have been added in the "Environmental Data" section on pages 27 to 29.
- Release timing of the website was set to be the same as the report.

OLYMPUS®

Your Vision, Our Future

Thank you for reading the Olympus CSR Report 2007. Your opinions and comments on the report are very much appreciated.
Environmental Development Department, Quality and Environment Administration Division, Olympus Corporation
 Fax: +81-42-642-9017

Q1 Please answer the following questions concerning the clarity of the report and the Olympus activities introduced in the report. Please rate each item by inserting the appropriate number in the parentheses using the following scale:
 5: Excellent 4: Very good 3: Good 2: Poor 1: Very poor
Under the column "Sections," place a check next to the title(s) you found most interesting.

| Item | Intelligibility | Evaluation of activities | Sections |
|--|-----------------|--------------------------|---|
| Total | () | () | Tell us the reason for your evaluation () |
| CSR of the Olympus Group | () | () | <input type="checkbox"/> Message from the President <input type="checkbox"/> Olympus Group Management Philosophy/Corporate Conduct Charter <input type="checkbox"/> The Olympus Group FY2006: Major Achievements in Our Social and Environmental Activities |
| Policies for Corporate Activities | () | () | <input type="checkbox"/> Challenges in Fiscal 2006 <input type="checkbox"/> Feature 1: Promoting "VOC Management" |
| Involvement with People | () | () | <input type="checkbox"/> Challenges in Fiscal 2006 <input type="checkbox"/> Feature 2: Providing a Safe and Comfortable Working Environment for Our Employees |
| Harmony with the Environment | () | () | <input type="checkbox"/> Challenges in Fiscal 2006 <input type="checkbox"/> Feature 3: Eco-Facilities Supporting Business Activities |
| Good Relations with Community | () | () | <input type="checkbox"/> Challenges in Fiscal 2006 <input type="checkbox"/> Feature 4: Colorectal Cancer Awareness Campaign |
| Efforts by Olympus Group Sites | () | () | <input type="checkbox"/> Efforts by Olympus Group Japan Sites <input type="checkbox"/> Efforts by Olympus Group Overseas Sites |
| Environmental Data | () | () | <input type="checkbox"/> Influences of Business Activities and Environmental Preservation Activities <input type="checkbox"/> Environmental Accounting |

Q2 In your opinion, does the report have any particularly good points or other points that need improvement?

Good points
 []

Points that need improvement
 []

Q3 How did you learn about this report?

Sent by Olympus Newspaper or magazine Exhibition or seminar
 Olympus website Olympus employee
 Other ()

Q4 In what capacity did you read this CSR report?

Customer Business partner Governmental or administrative employee
 Research or education Media CSR or environmental organization
 Company employee with responsibilities for CSR or the environment Student
 Resident in the neighborhood of an Olympus plant Employee of the Olympus Group or his/her family member
 Other ()

Thank you for your cooperation. Please complete the following (optional).

Name: _____
 Address: _____
 Contact: _____ Tel: _____ Fax: _____
 E-mail: _____
 Profession, company, section: _____

Please send me Please do not send me the next CSR Report.

* All personal information that you provide through this questionnaire will be used only as a reference by Olympus to improve its CSR efforts; as contact information to send the next CSR Report, if requested by you; and as a means to reply to your questions. Please refer to our website for details of our privacy policy (<http://www.olympus.co.jp>).

The Overview of CSR and Environmental Information

This report discloses information by highlighting particularly noteworthy pieces of information, including new actions that started in FY2006, or important news, in order to help the reader easily understand the entire picture of the Olympus Group's business activities.

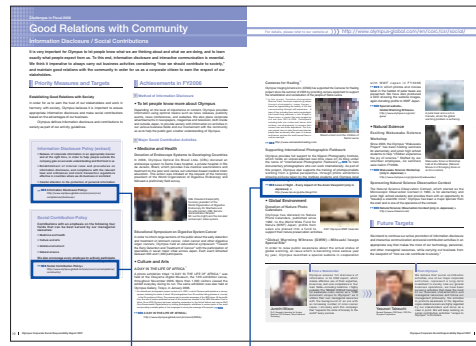
Extensive and detailed information on the CSR activities of the Olympus Group is provided on our website.



The WEB symbol ▶▶WEB

This symbol is used when more detailed information is provided on our websites. WEB Supplemental Materials mark ▶▶WEB provides the URL for the content of each item in this report.

▶▶WEB Supplemental Materials =
<http://www.olympus-global.com/en/corc/csr/wdata/>



WEB Supplemental Materials mark provides relevant links
<http://www.olympus-global.com/en/corc/csr/wdata/>

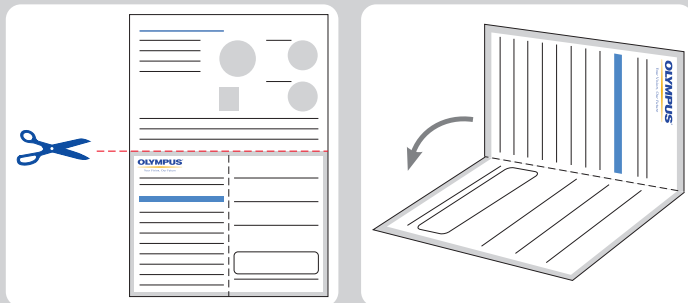


Olympus CSR Activities website
<http://www.olympus-global.com/en/corc/csr/>

How to return the questionnaire

Send the completed questionnaire via FAX, or by mail making a postcard as shown below.

* You can also submit your answers on our CSR and environmental activities website.



- 1 Cut off the page along the line.
- 2 Fold the paper with the questionnaire inside, seal it with paste and send it by mail.

Cut Here

1 9 2 8 7 9 0

NO POSTAGE NECESSARY
IF MAILED TO JAPAN

国際郵便料金受取人払

INTERNATIONAL BUSINESS REPLY MAIL/RESPONSE PAYEE

JAPAN

オリンパス株式会社
品質環境本部環境推進部 行
石川町 2951
Hachioji-shi, TOKYO
JAPAN

Par Avion
Airmail

Valid until 31 Aug 2008
IBRS Number: Hachioji 4

八王子局承認 4
差出有効期間
平成 20 年 8 月
31 日