

OLYMPUS

True to Life



Olympus Corporation

Company Presentation

April 2024

Disclaimer:

- Any content or information (“Content”) presented herein is illustrative in nature and does not guarantee or represent specific information, outcomes or results.
- Under no circumstances shall Olympus or its employees, consultants, agents or representatives be liable for any costs, expenses, losses, claims, liabilities, or other damages (whether direct, indirect, special, incidental, consequential, or otherwise) that may arise from, or be incurred in connection with, the Content or any use thereof.

A couple stands on a grassy mountain peak, looking out over a vast landscape of rolling hills and mountains under a dramatic, cloudy sky. The scene is bathed in the warm light of late afternoon or early morning, with long shadows and a golden glow on the clouds. The couple is seen from behind, their figures silhouetted against the bright sky. The woman has blonde hair tied back, and the man is wearing a dark jacket. The foreground is a mix of green and brown grass, suggesting a high-altitude or late-summer setting. The background features a range of mountains, with a prominent peak in the distance. The overall mood is one of tranquility and awe, capturing a moment of shared experience in nature.

OLYMPUS

True to Life

"True to Life" is our global brand message that expresses Olympus's commitment to Our Purpose.

At Olympus, we believe everyone should have the opportunity to live life to the full. Every day we are advancing medical technology solutions to help people everywhere fulfill their desires, their curiosity, their dreams, their ambitions, and their lives.

A woman with long dark hair, wearing a blue patterned top, is pointing at a glass wall covered in colorful sticky notes. A man with a shaved head, wearing a blue striped shirt, stands behind her, looking at the wall. The scene is set in a modern office environment with large windows in the background.

01 As a Globally Leading MedTech Company

02 Our Business Field

03 New Company Strategy

04 For a Sustainable Society

05 Fostering a Healthy Organization

06 Company Information

07 Appendix: Olympus History



01

**As a Globally Leading MedTech
company**

A photograph of a woman with long brown hair hugging a child from behind. The child is wearing a dark, quilted puffy jacket. The woman is smiling and looking towards the child. The background is a blurred outdoor setting. The entire image has a blue color overlay. A large yellow quote mark is on the left side of the image.

“

We will continue to make
people's lives **healthier, safer,**
and more fulfilling.

”

Corporate Philosophy

OUR PURPOSE

Making people's lives healthier, safer and more fulfilling

OUR CORE VALUES



PATIENT FOCUS

We put patients at the heart of everything.



INTEGRITY

We do the right thing.



INNOVATION

We look for new ways to make things better.



IMPACT

We take accountability and get things done.



EMPATHY

We care for one another and work together.

Our Contribution to Patients Care

1.9 million

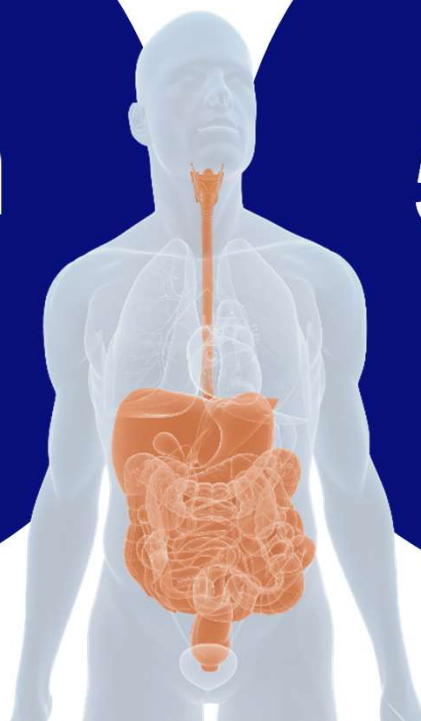
**New Incidents of
Colon Cancer**

Source: <https://gco.iarc.fr/today/data/factsheets/cancers/39-All-cancers-fact-sheet.pdf>, GLOBOCAN 2020

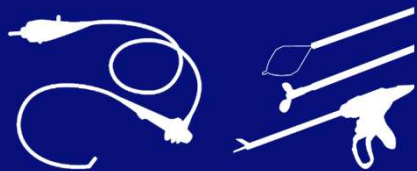
51 million

**Colonoscopies Performed
Worldwide**

*Numbers of the US, Canada, Poland, South Korea, Australia, India, and Russia: As of 2022; Japan: As of 2020; China, Germany, France, Italy, Spain, the UK: As of 2019



Our Contribution to Patients Care



100

Diseases or Conditions Treated

At Olympus we have versatile medical devices with the ability to treat approximately 100* diseases or conditions

Source: Based on the Company's research, as of March 2023

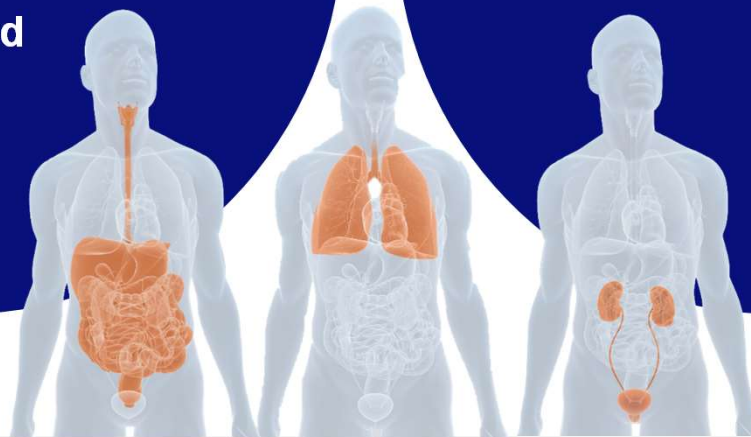


TOP 3

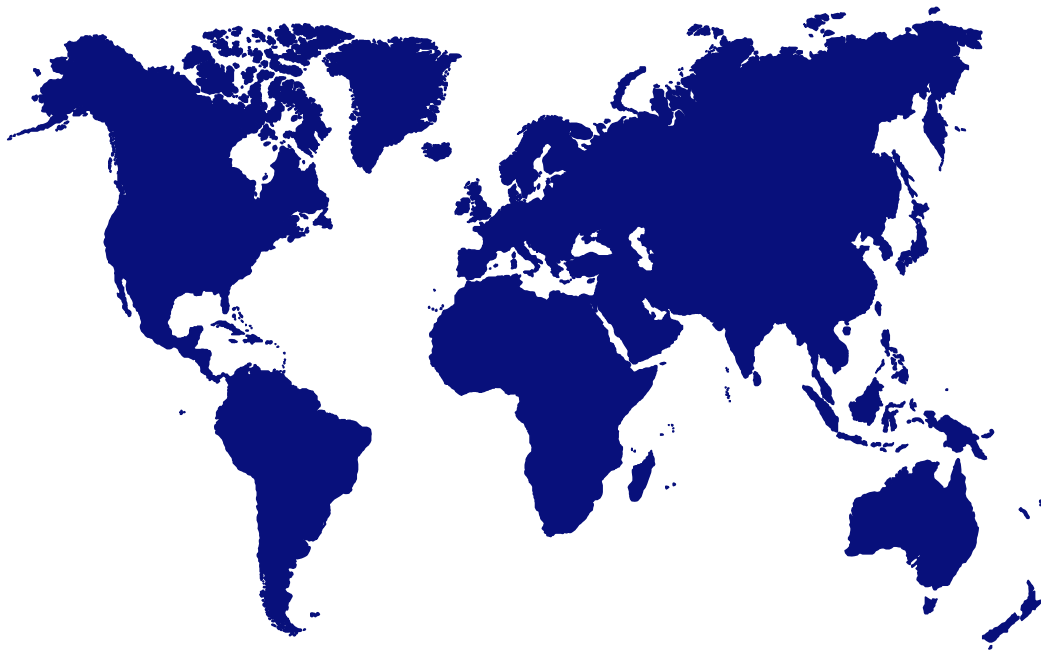
Cancers Treated

Olympus provides products/solutions for lung, colorectum and stomach
- Three cancers from the top 5* highest incidence of cancers

*Top 3 highest incidence of cancers excluding breast and prostate cancer, as of March 2023. Source: <https://gco.iarc.fr/today/data/factsheets/cancers/39-All-cancers-fact-sheet.pdf>, GLOBOCAN 2020



Making people's lives healthier, safer and more fulfilling



32,805

Employees Worldwide*

* As of March 2023, Including discontinued operation 4,124

38

Countries or Regions*

* As of March 2023

Making people's lives healthier, safer and more fulfilling



TOP 100

Global Innovator

Since 2012 to 2020, and in 2022 and 2023, Olympus has been awarded as one of the top 100 most innovative companies in the world.

<https://clarivate.com/top-100-innovators/>



291

Awards

Since 1966, Olympus has been consistently honored with national and international design awards for its innovative product designs*

*As of March 2023



14,000

Patents

across our product portfolio*

*As of March 2023



CO2 "0"

Emissions by 2030

We set as a target of achieving net zero CO2 emissions by 2030 from our site operations

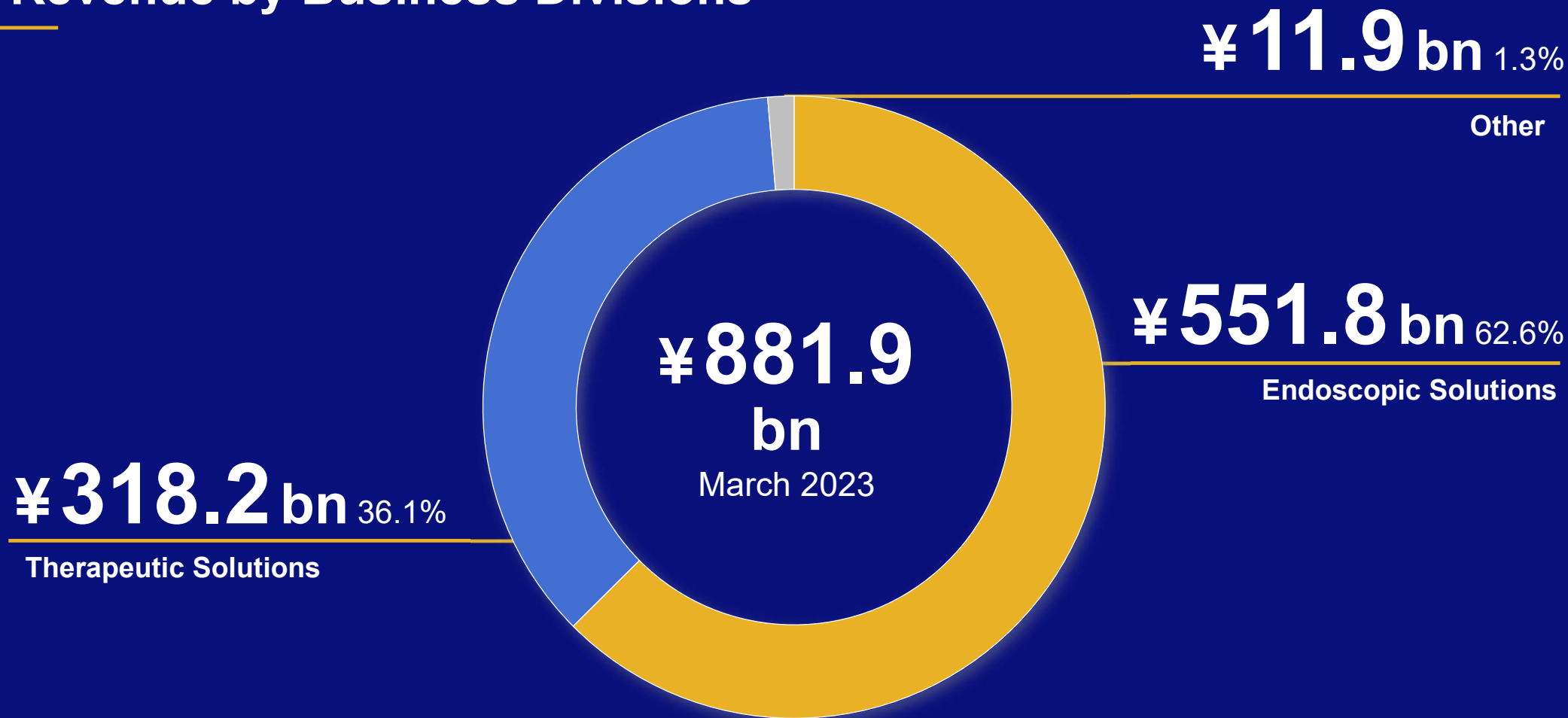
*As of March 2023



02

Our Business Field

Revenue by Business Divisions

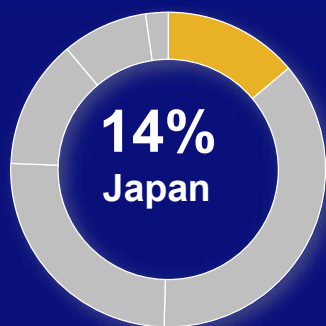


Revenue by Region

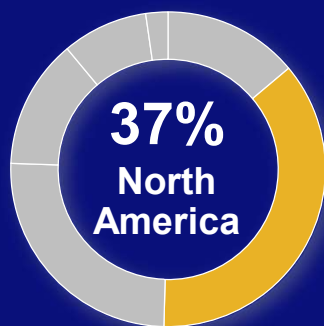


¥881.9 bn

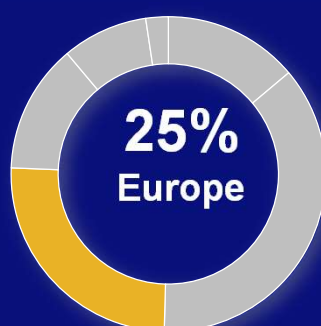
March 2023 *Approx.



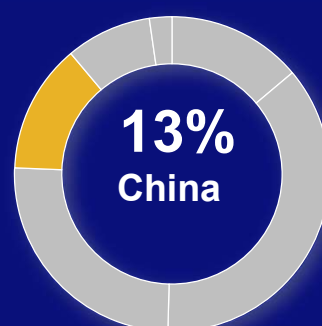
¥122.5bn



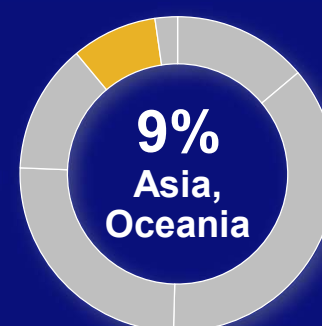
¥322.2bn



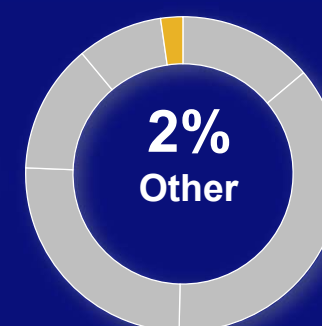
¥222.2bn



¥117.1bn

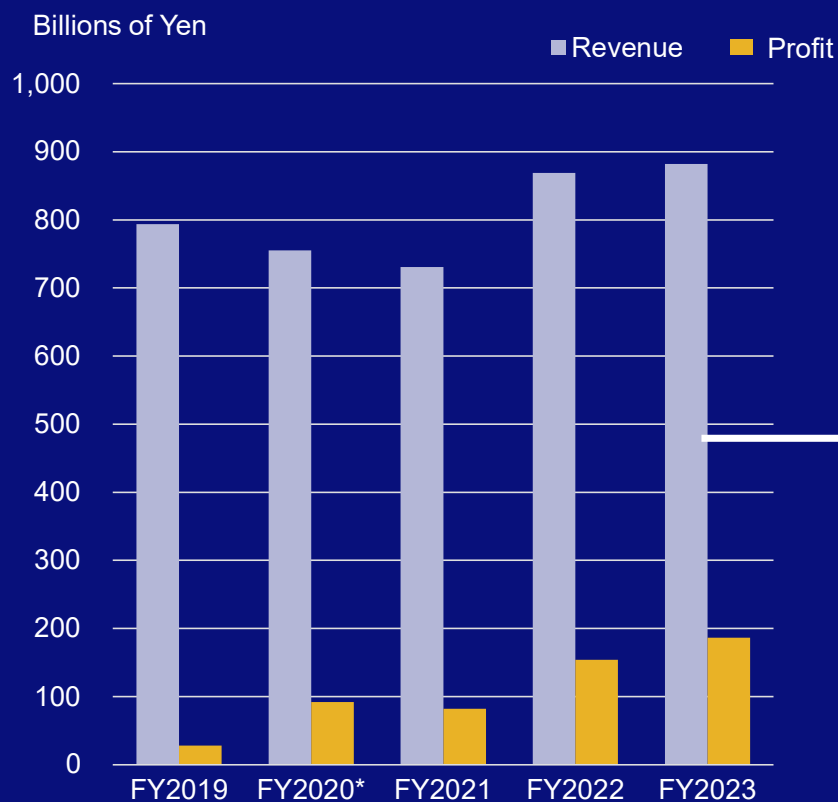


¥77.8bn

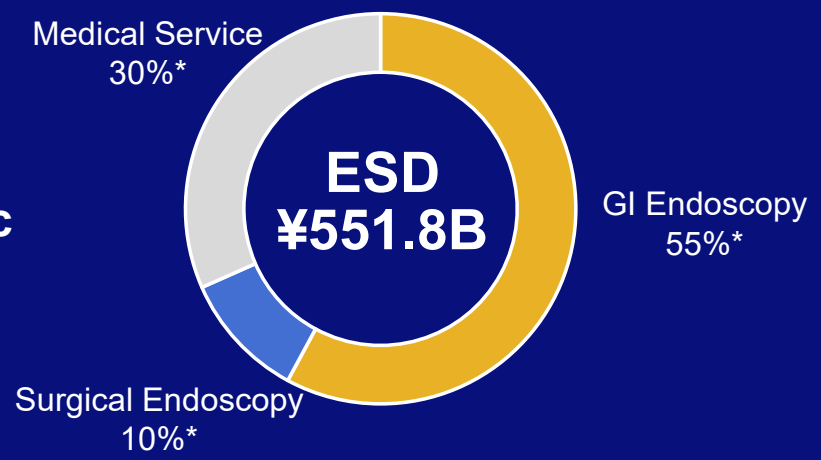


¥20.2bn

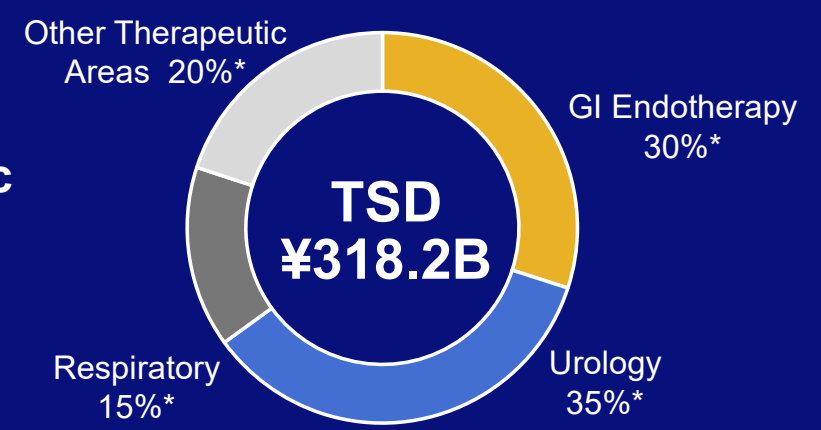
Revenue and Operating Profit



Endoscopic Solutions
63%



Therapeutic Solutions
36%



Note) We split off the imaging business to a special purpose company established by Japan Industrial Partners, Inc. on January 1, 2021. In this regard, imaging division is categorized as a discontinued operation, effective Q2 of FY2021 and figures of FY2020 is restated.
*Due to rounding, the total may not add up to 100%

Endoscopic Solutions

Gastrointestinal Endoscopy System



Video endoscopy system

Surgical Endoscopy System



4K surgical endoscopy system



3D surgical endoscopy system



Reprocessing



Endoscope reprocessor

Customer Solutions (Digital Healthcare Solutions)



Customer Solutions Virtual Collaboration

Medical Services



Repair center

Note: Products or devices presented include future technology which may be pending regional regulatory approval and are not available for sale in all regions.

Therapeutic Solutions

Endotherapy Devices



Hemostatic Clips



Electrosurgical knife



Retrieval basket

Urology



Ureteroscopes



TFL lithotripsy fibers



Bipolar resection electrodes



Cystoscopy



iTind™ System¹



Solve™ SuperPulsed Laser System



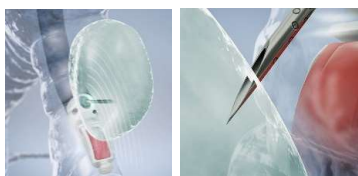
PLASMA+™ resection generator and PLASMA+ consumables

Respiratory

¹ iTind procedure does not require a permanent implant and preserves sexual function and continence, while reducing the need for a post procedure catheter. Procedure can be done in the MD office setting.



Bronchoscopy (traditional and single-use) and endoscopic devices



EBUS™ bronchoscope² and EBUS™ -TBNA needles³



Endobronchial valves⁴

² EBUS: Endobronchial ultrasound

³ EBUS-TBNA: Endobronchial ultrasound-guided transbronchial needle aspirations

⁴ The device is approved as Humanitarian Device Exemption. Authorized by Federal law for use in the treatment of air leaks. The effectiveness of this device for this use has not been demonstrated.

Surgical Energy Devices

Surgical Energy Device



Ear, Nose and Throat

Rhino-laryngo scope



Gynecology

Rigid endoscope (Telescope)



Note: Products or devices presented include future technology which may be pending regional regulatory approval and are not available for sale in all regions.

A photograph of two surgeons in an operating room, wearing blue scrubs, masks, and hairnets. The surgeon on the right is holding a surgical instrument. The background shows medical equipment and a blue-tinted environment.

03

New Company Strategy

Guiding Principles

Patient safety and sustainability



- 1 Resolve pending commitments to the FDA, build a foundation of trust through measurable actions and data with regulatory bodies and with our customers.
- 2 Lead in organization health and ESG

Innovation for growth



- 3 Strengthen the Olympus® brand; elevate the experience of our customers
- 4 Grow our business through purposeful innovation and acquisitions

Productivity



- 5 Build a high performing organization focused on patient safety and product quality
- 6 Support simplicity and operational efficiency

“ Making people’s lives healthier, safer, and more fulfilling. ”

Four Value Pools



Business
and Global
Expansion

- Increased demand for endoscopic procedures for diseases in our focus areas of GI, urology, and respiratory due to the increase in cancer and chronic diseases
- Regional expansion of the EVIS X1™ endoscopy system as our growth driver
- Sustainable growth opportunities in China



Care Pathway
Enhancement

- Enhancing patient care pathways in key areas such as early detection, characterization/diagnosis/staging, and treatment to meet ever-changing expectations for patient care



Strategic
M&A

- Focus on tuck-in M&A* in core or high-growth adjacencies

* M&As that fit our portfolio and complement or enhance our existing business



Intelligent
Endoscopy
Ecosystem

- Shaping a new era of Intelligent, AI-powered endoscopy

For a Sustainable Growth

We will continue to Focus on disease states where Olympus can have an impact as an industry-leader and Shape and Enable future growth by investing in new ways to elevate the standard of care.



Activities to enable investments and innovation



QARA – functional transformation globally

- Execute transformation with the aim of a **single global quality system** and fully harmonize processes
- **Enhance Global Quality and Compliance functions** to support consistent execution
- Resolve compliance issues and **complete remediation**



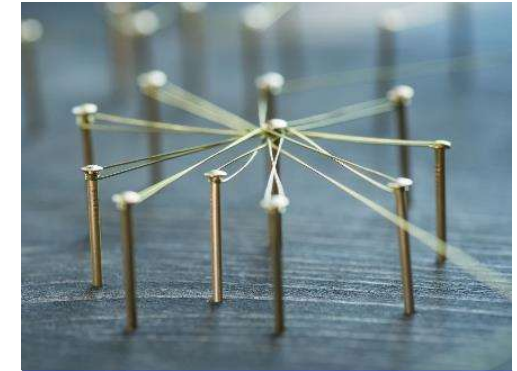
R&D – investments to accelerate innovation

- Apply an **unmet need-oriented innovation** approach
- Invest for future by furthering **an innovation engine**
- Pro-actively seek out **strategic partnerships**
- **Work to accelerate time-to-market**



Mfg & SCM – opportunity for COGS improvements

- Improve **efficiency and cost** to apply a fit-for-purpose organization and processes
- Actions include **site and resource streamlining, fast-track efficiencies, procurement and supply chain** best-practices, and uncover benefits from digitization



Global TOM* – efficiencies by an improved operations

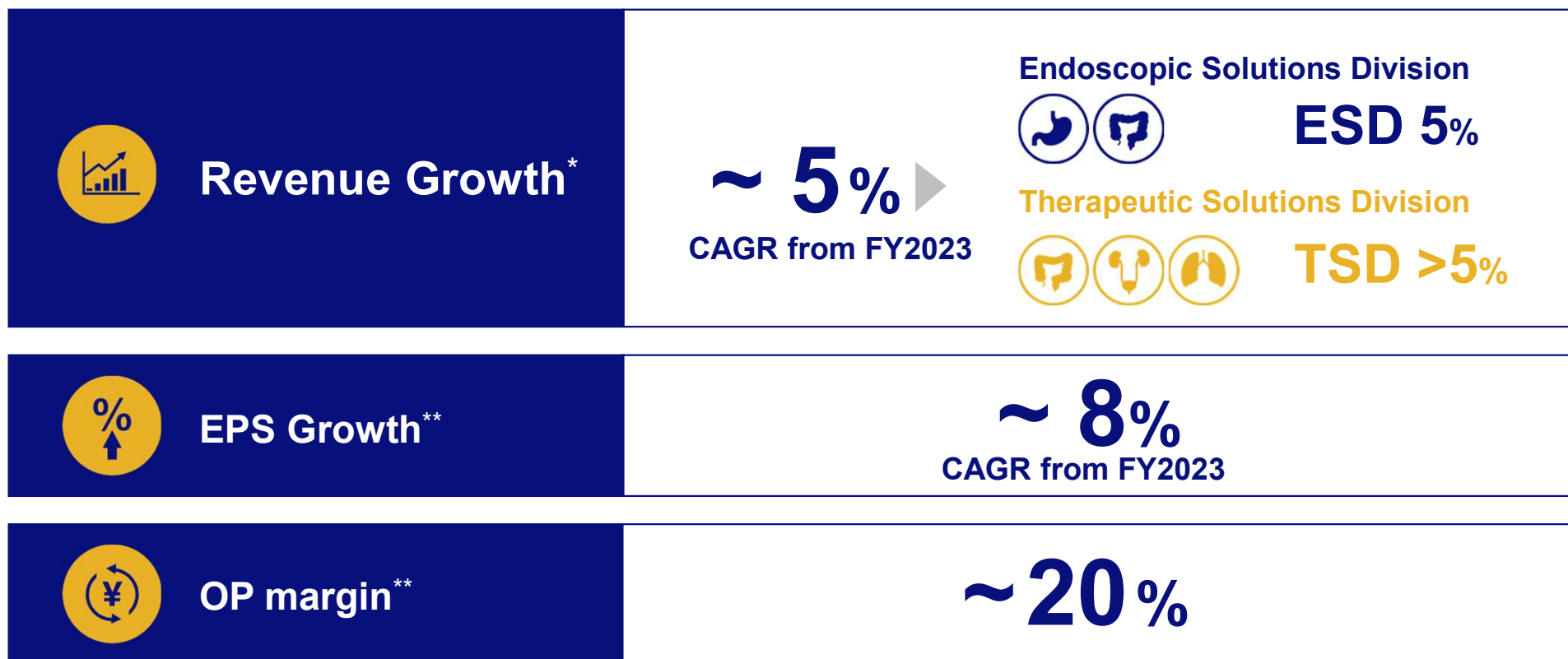
- Further fine-tune our **global governance and operation** to establish a high-performing organization of a global medical company that **unlocks capital to drive innovation**
- Enable **cross-functional and effective decision-making, with efficient resource allocation** and rigorous execution to fund & deliver key projects

*TOM = target operating model

Support patient safety according to the highest industry standards

FY24-26 Financials

Competitive growth along with steady value creation



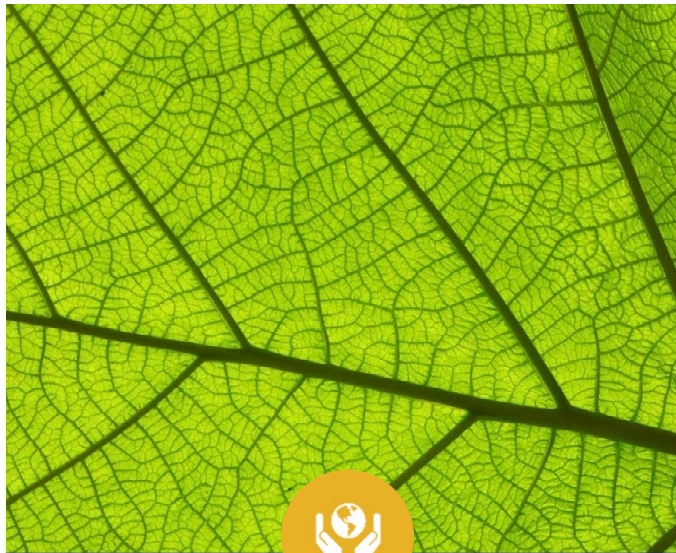
*constant currency basis **Adjusted for extraordinary Items
- Exclude "Other income / expenses" - No adjustment will be made for the impact of exchange rate fluctuations; actual exchange rate will be used

A photograph of a woman and two young girls sitting on the ground in a garden, planting a small tree. The woman is smiling and looking down at the girls. The girls are focused on the task. The scene is overlaid with a blue tint. The number '04' is written in yellow on the left side, and the text 'For a Sustainable Society' is written in white in the center.

04

For a Sustainable Society

Common Topics in ESG*



Environment

- Climate Change / Carbon Neutrality
- Circular Economy
- GHG Emissions
- Water & waste management



Social

- Human Rights
- Diversity, equality and inclusion
- Workplace safety
- Healthcare Access & Outcome



Governance

- Corporate Risk Management
- Management Structure
- Board Structure and Diversity
- Reporting Transparency

*Major examples only / not limited

ESG six focus areas and materiality topics with top priorities



Healthcare Access and Outcome

Contribution to health equity and access



Compliance, Product Quality and Safety

Quality and safety in product, service and solution



Responsible Supply Chain

Supply chain risk mitigation and resilience



Healthy Organization

Diversity, equity and inclusion



Carbon Neutral Society and Circular Economy

Circularity through product stewardship, carbon emissions (Scope 1, 2 and 3)



Corporate Governance

Corporate governance and reporting transparency

Healthcare Access and Outcome



+20%

**Training in
Emerging countries**

CRC* related training in target emerging countries and regions



+20%

**Training provided
with HCPs**

CRC* related online / hybrid training provided with HCPs globally



* CRC: Colorectal cancer

Compliance, Product Quality and Safety



Quality and safety in product,
service and solution

Timely ESG disclosures

According to SASB Standards



Responsible Supply Chain



Supply chain risk mitigation and resilience

Annual assessment / monitoring
For multi-tier supply chain risks



Healthy Organization



30%

Promoting the Advancement of Women

Management positions held by women

by FY28 globally



100%

Paternity Leave

Eligible male employees in Japan take parental leave by

by FY26



Carbon Neutral Society and Circular Economy



Net-zero

Net-zero GHG emissions across scope 1, 2 and 3* by 2040



Carbon Neutral

In our site operations across scope 1 and 2* by 2030



Scope 1: Direct greenhouse gas emissions by combustion of fuels in our sites
Scope 2: Indirect greenhouse gas emissions from our sites use of electricity, heat or steam supplied by other companies
Scope 3: Other indirect greenhouse gas emissions (excluding Scope 1 and Scope 2)

Corporate Governance



Corporate governance and reporting transparency

Enterprise Risk Management
applied consistently across the globe





05

Fostering a Healthy Organization

An Evolution in Corporate Culture

A Healthy Organization

Committed to delivering Olympus' Purpose by creating a working culture where everyone is empowered to perform their best

Purpose-driven

1

Inspirational Leadership

Leaders present clear strategies and guide Olympus' future

2

Collaboration

Collaboration across company departments and geographical regions, and realization of open and constructive discussions

3

External, Customer Orientation

Identify customer and market trends and respond to future business needs by valuing new ideas

People-centric

4

Empowerment

Anyone making decisions is recognized as bearing responsibility and charts their own career path

5

Encouraged to Challenge

Fostering a culture that values diverse ideas, and encourages taking on new challenges

6

Work-life Balance

Creating attractive work environments and valuing employee well-being

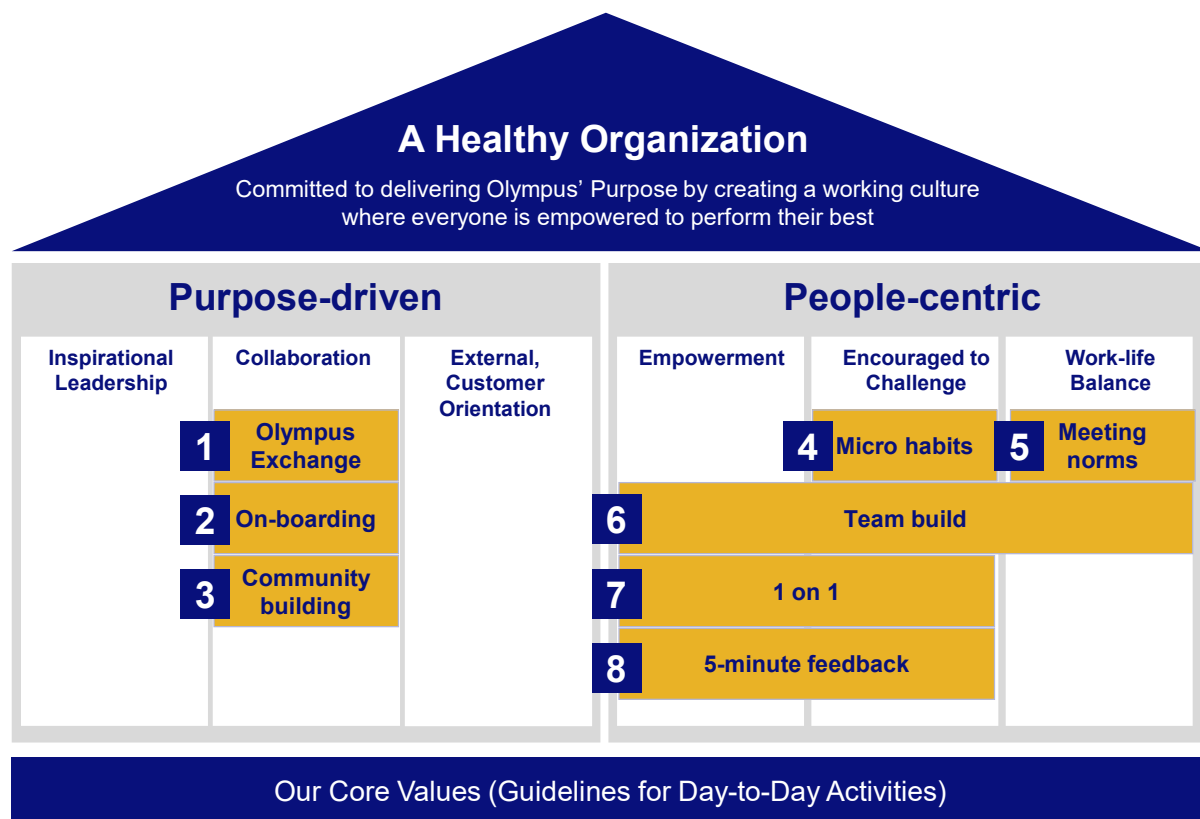
Our Core Values (Guidelines for Day-to-Day Activities)

The six dimensions necessary to achieve a Healthy Organization and Our Core Values

Healthy Organization

We define our aim for a Healthy Organization as “Committed to delivering Olympus' Purpose by creating a working culture where everyone is empowered to perform their best” and we consider there to be six dimensions which is necessary to bring it to fruition. We are currently advancing initiatives at the global level to further improve those six dimensions.

Helpful Tools and Practices to Support Our Journey



The six dimensions necessary to achieve a Healthy Organization and Our Core Values

■ Key issues addressed

Health Initiatives Description

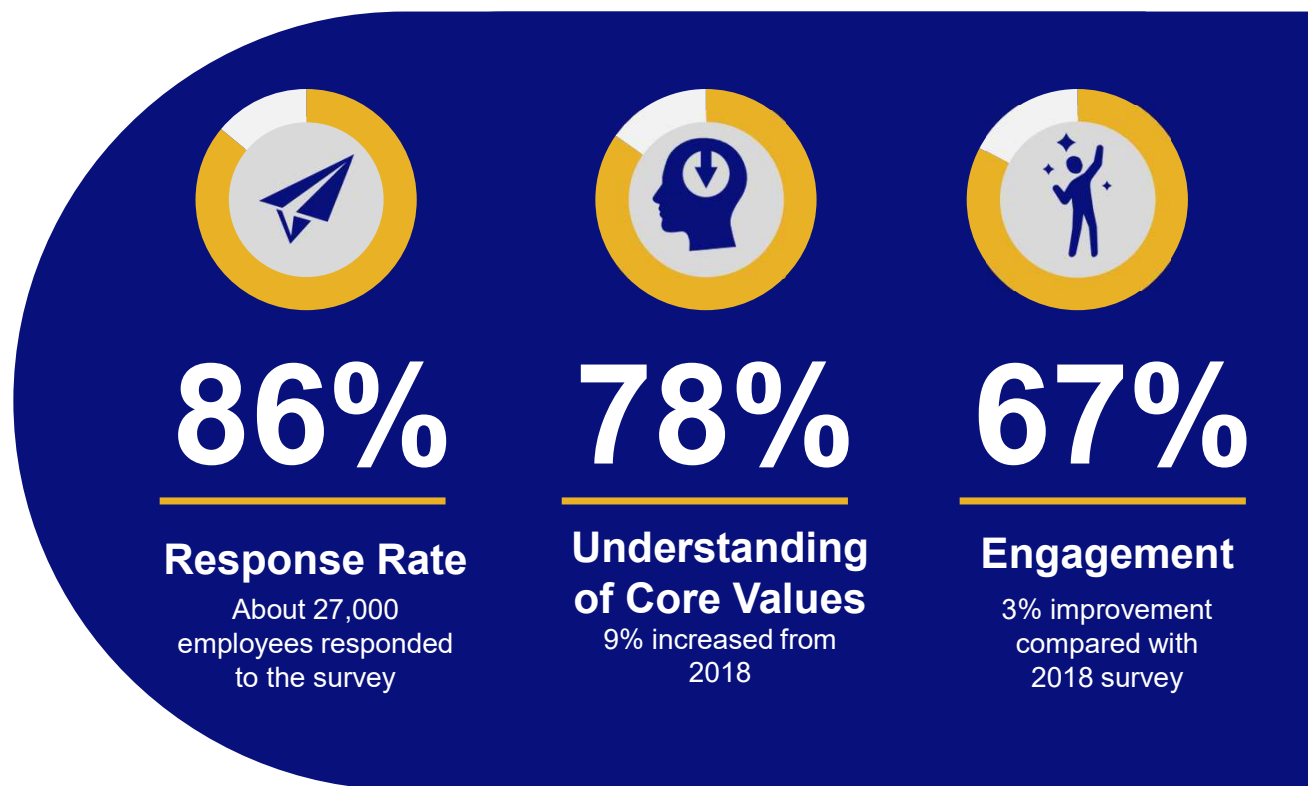
1	Olympus exchange	Cross-functional exchange of knowledge; improves understanding in areas out of own organization, and Olympus' business etc.
2	Onboarding	Content enables new joiners for better cross collaboration, and content enables first experience in global projects or environment
3	Community building	Enable colleagues to develop communities to increase cross-collaboration & networking
4	Micro-habits to encourage challenge	Encourages failure learning mindset through adopting micro-habits and sharing best practices
5	Meeting norms	Approach and tools intended to improve meeting efficiency and decrease unnecessary meetings
6	Team Build	Approach involves learning and reflection to improve understanding and create a comfortable environment within team
7	1 on 1	Support for managers and members to regularly interact, support growth of members and raise performance as result
8	5-minute feedback	A short and timely casual session to encourage two-way feedback

Note: Some other initiatives are ongoing in parallel.

Core Values Survey

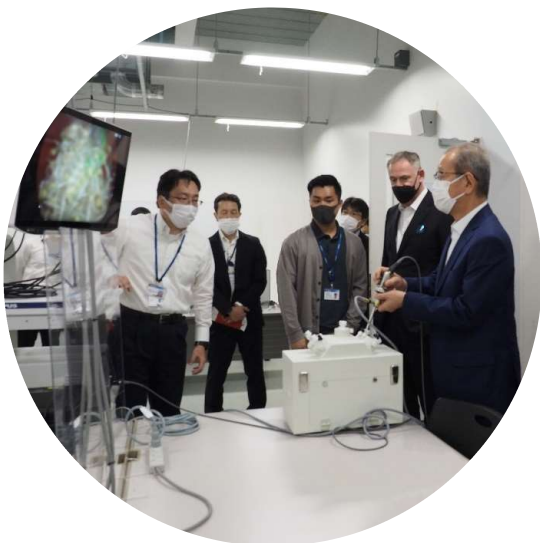
The Olympus Core Values Survey represents an important employee engagement tool that supports our aim to create a Healthy Organization.

And we conduct employee pulse check every year and aimed to track the impact and progress of the actions we derived from last year's Global Core Values Survey (GCVS), to check if we are right on track to further improve enablement, engagement, and to support retention of our employees.



As of Nov. 2022

Follow-up Measures for Our Core Values Survey



Gemba Visit

Management visit Factory and R&D to close the gap between management and staff. Management members gain insight into the current situation that is useful for making decisions and a collaborator in leading the company.

6,000*

Global Program

We are providing training to all employees worldwide to strengthen their business and execution since we believe this is a key factor for ensuring organizational change.

No. of participants*

4,300*

Global Communication Skill Strengthening Program

In Japan, we are undertaking the Global Communication Skill Strengthening Program to improve English proficiency and support cross-cultural understanding.

No. of participants*

*2020-2022 As of Nov 2022

06

Company Information



Company Outline

Company Name	Olympus Corporation
Market	Tokyo Stock Exchange, Prime Market (7733)
Established	October 12, 1919
Director, Representative Executive Officer, President and CEO	Stefan Kaufmann
Head Office	2951 Ishikawa-machi, Hachioji-shi, Tokyo 192-8507, Japan
Share Capital	124.643 billion yen (As of March 31, 2023)
Consolidated Revenue	881.9 billion yen (Fiscal year ended March 31, 2023)
Consolidated Headcount	32,805 (As of March 31, 2023, Including discontinued operation 4,124)



Executive Officers



Yasuo Takeuchi

Director, Representative Executive Officer, Executive Chairperson and ESG Officer



Stefan Kaufmann

Director, Representative Executive Officer, President and Chief Executive Officer



Frank Drewalowski

Executive Officer and Endoscopic Solutions Division Head



Seiji Kuramoto

Executive Officer and Therapeutic Solutions Division Head



Tatsuya Izumi

Executive Officer and Chief Financial Officer



Gabriela Kaynor

Executive Officer and Chief Strategy Officer



Tetsuo Kobayashi

Executive Officer and Chief Manufacturing and Supply Officer



André Roggan

Executive Officer and Chief Technology Officer



Boris Shkolnik

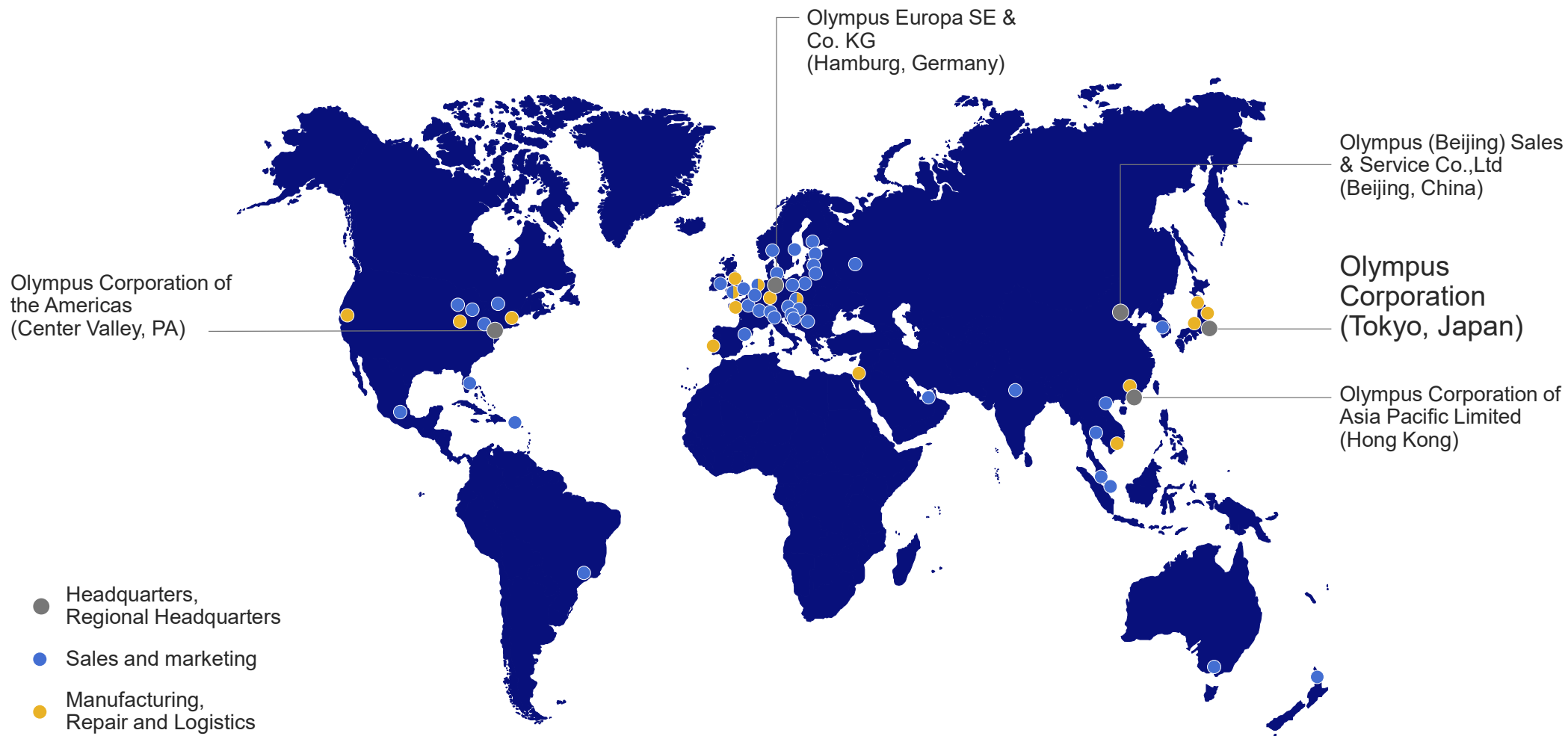
Executive Officer and Chief Quality Officer



Shigeto Ohtsuki

Executive Officer and Chief Human Resources Officer

Olympus Locations





07

Appendix: Olympus History

Olympus History



Sales launch of **Asahi** microscope.

1920



Launch of **Showa GK** immersion microscope.

1927



Renaming of company to **Olympus Optical Co., Ltd.**

1949



Launch of the **GT-I** gastrocamera.

1952



1919

Founding of **Olympus** by Takeshi Yamashita under the company name **Takachiho Seisakusho**; established in Tokyo, Japan, for domestic production of microscopes.



1921

Registration of **Olympus name** as a trademark.



1936

Launch of first Olympus camera, the **Semi-Olympus I**, after development of Zuiko photographic lenses.

1950

Development of world's **first practical** gastrocamera.



1959

Launch of **Olympus PEN**, an innovative half-frame film camera.

Olympus History



Launch of **GTF™** gastrocamera with fiberscope.

1964

Establishment of **Olympus Corporation of America** as a sales subsidiary for microscopes and medical equipment in the United States.

1968

Launch of **OM-1**, a compact, lightweight, SLR camera, which was initially named M-1.

1972

Establishment of **Olympus Camera Corporation** as a sales base in the United States.

1977



1964

Start up of **Olympus Optical Co.** in Hamburg, Germany, as Olympus' European headquarters.



1966

Launch of **GFS** gastrofiberscope, which didn't have a camera mechanism on the tip.



1969

Introduction of **ZUIKO PEARLCORDER™** recorder, the world's first microcassette tape recorder.



1975

Collaboration with Winter & Ibe GmbH to produce surgical rigid medical endoscopes, with Olympus supplying the optical systems.



1979

Opening of the **National Service Center** in San Jose, California, for U.S.-based Olympus equipment repairs.

Olympus History



1979

Acquired **Winter & Ibe GmbH** to establish Olympus Winter & Ibe for the production and supply of surgical endoscopes and instruments.

Launch of **BH2** microscope series.

1980



1980

Development of an Olympus ultrasound endoscope system.

Development of **OES** (Olympus Endoscopy System).

1983



1983

Launch of **AH2** microscope series, the world's first microscope with autofocus functionality.



Merger of two U.S. sales units to form the North American subsidiary, Olympus Corporation.

1983



1985

Introduction of Olympus' endoscopic video information system.

Acquisition of British company **KeyMed Ltd.** as an Olympus subsidiary.

1987



1987

Establishment of the Beijing office to market microscopes and endoscopes in China.



Launch of **EVIS™100** (1989) and **200** (1990) endoscopic video information systems.

1990



1991

Launch of first μ [mju:] / Infinity Stylus camera.

Olympus History

Launch of **BX** series of biological microscopes and **UIS** series of object lenses, which improved product appeal in the AX, BX, CX, and IX series of microscopes.

1993



Launch of **C-800L/D-300L** and **C-400L/D-200L**, Olympus' first consumer digital cameras.

1996



Launch of **MX50** semiconductor inspection microscope.

1996



Introduction of **IPLEX™** industrial videoscope system.

2001



1995

Establishment of **Olympus Endo-Repair Europa GmbH**, endoscope repair service center for the European market, in Hamburg, Germany.



1996

Launch of **FLUOVIEW™** confocal laser scanning biological microscope.



2000

Introduction of **EVIS EXERA™** series endoscopic video system.



2002

Launch of **VISERA™** series, an integrated video system for surgery.

Olympus History



Launch of electrosurgical **Itknife™** device.

2002



Renaming of company to Olympus Corporation.

2003



Launch of **FLUOVIEW™ FV1000** system, the world's first laser scanning microscope with two independent scanners.

2004



Opening of Shirakawa Medical Equipment Service Operation Center (SORC Shirakawa) in Japan.

2005



2002

Launch of **EVIS LUCERA™** system, the world's first high-definition endoscopic video system.

2003

Launch of **E-1** digital SLR camera with interchangeable lenses.

2004

Launch of **LEXT™ OLS3000** microscope, the first in the LEXT 3D confocal laser microscope series.



2005

Acquisition of **R/D Tech Inc.** to expand the nondestructive testing device business.



Olympus History

Launch of **EVIS EXERA II™** and **EVIS LUCERA SPECTRUM** endoscopic video systems.

2006



Merger with **Gyrus PLC** to deliver additional technology and sales/marketing knowhow to the Olympus surgical business.

2008



Launch of **EPOCH1000** series ultrasonic flaw detectors.

2009



Launch of **BX3** system biological microscope.

2010



Acquisition of **Innov-X Systems, Inc.** to expand Olympus' presence in nondestructive testing.

2010



2006

Opening of Shanghai Medical Equipment Service Operation Center (SORC Shanghai) in China.



2008

Establishment of **Olympus Vietnam Co., Ltd.** manufacturing facility for cameras and medical equipment.



2009

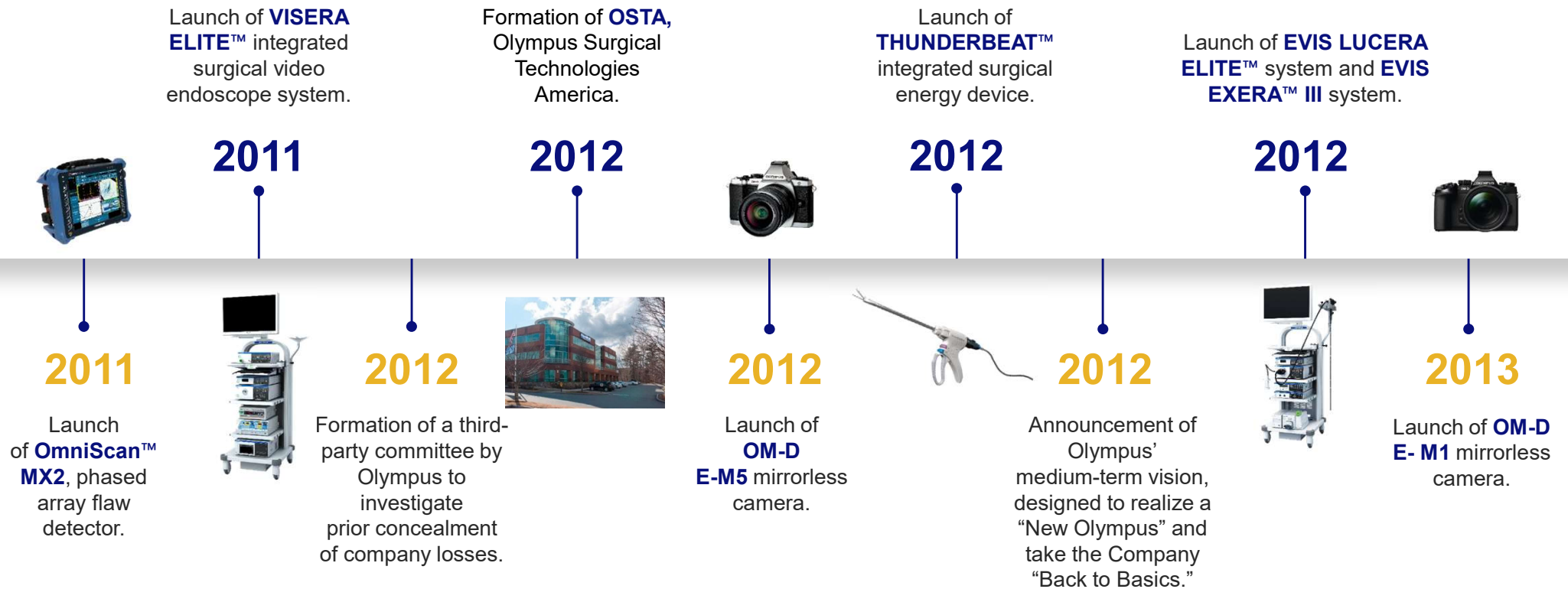
Launch of **Olympus PEN E-P1** mirrorless camera.



2010

Formation of **OSTE**, Olympus Surgical Technologies Europe.

Olympus History



Olympus History



Launch of
OM-D E-M1 Mark II.

2016



Launch of **ORBEYE™**
Surgical microscope,
incorporating the latest
advances in 4K 3D video
technology.

2017

Celebration of
Olympus
100th Anniversary.

2019



Transfer of
**Imaging
Business**

2021



Transfer of
**Scientific
Business**

2023

2015

Introduction of a
**surgical endoscope system
with 4K** resolution based on
technology developed by
Sony Olympus Medical
Solutions Inc.



2016

Launch of **VANTA™**
series, a range of
handheld XRF
analyzers.



2018

Introduction of
new
**Corporate
Philosophy.**



2020

Launch of
EVIS X1™
System for
EMEA and
some Asian
countries/
regions*

2022

Launch of
**VISERA
ELITE™ III**
Surgical
Visualization
Platform for
EMEA and
some Asian
countries/
regions*

*Not Available for Sale in the United States

OLYMPUS

A thick, horizontal yellow line that tapers slightly at both ends, positioned directly beneath the word "OLYMPUS".

Olympus is a registered trademark of Olympus Corporation, Olympus America Inc., and/or their affiliates.