

Spreading Olympus' Unique Corporate Citizenship Activities around the World



Since its establishment in 1919 with the mission to contribute to the health of the people at large through epidemiology and the mass production of microscopes, the company has continued to deliver products and services that are beneficial to society. Examples are medical endoscopes, useful for early detection and treatment of cancer and other diseases, microscopes that aid cutting-edge research in life sciences, non-destructive testing instruments that are used in inspecting aircraft engines to assure safety and cameras that bring people the joy of photography and enrich their lives. Olympus regards them as “contributions to society through business operations.”

At the same time, corporate citizenship activities have been held in various parts of the world, making use of the company's knowledge and technologies gained through business. Activities to

promote awareness of the importance of medical care and health and those aimed at building human resources for the future through the use of microscopes and cameras can be regarded as uniquely Olympus.

We are very proud that we are able to engage in these activities aimed at bringing better health and greater happiness to people, not only through our business operations but also through our corporate citizenship activities. Olympus intends to meet the expectations of all its stakeholders on a higher level and to realize sustainable growth together with society through action as a good corporate citizen.

Hiroyuki Sasa

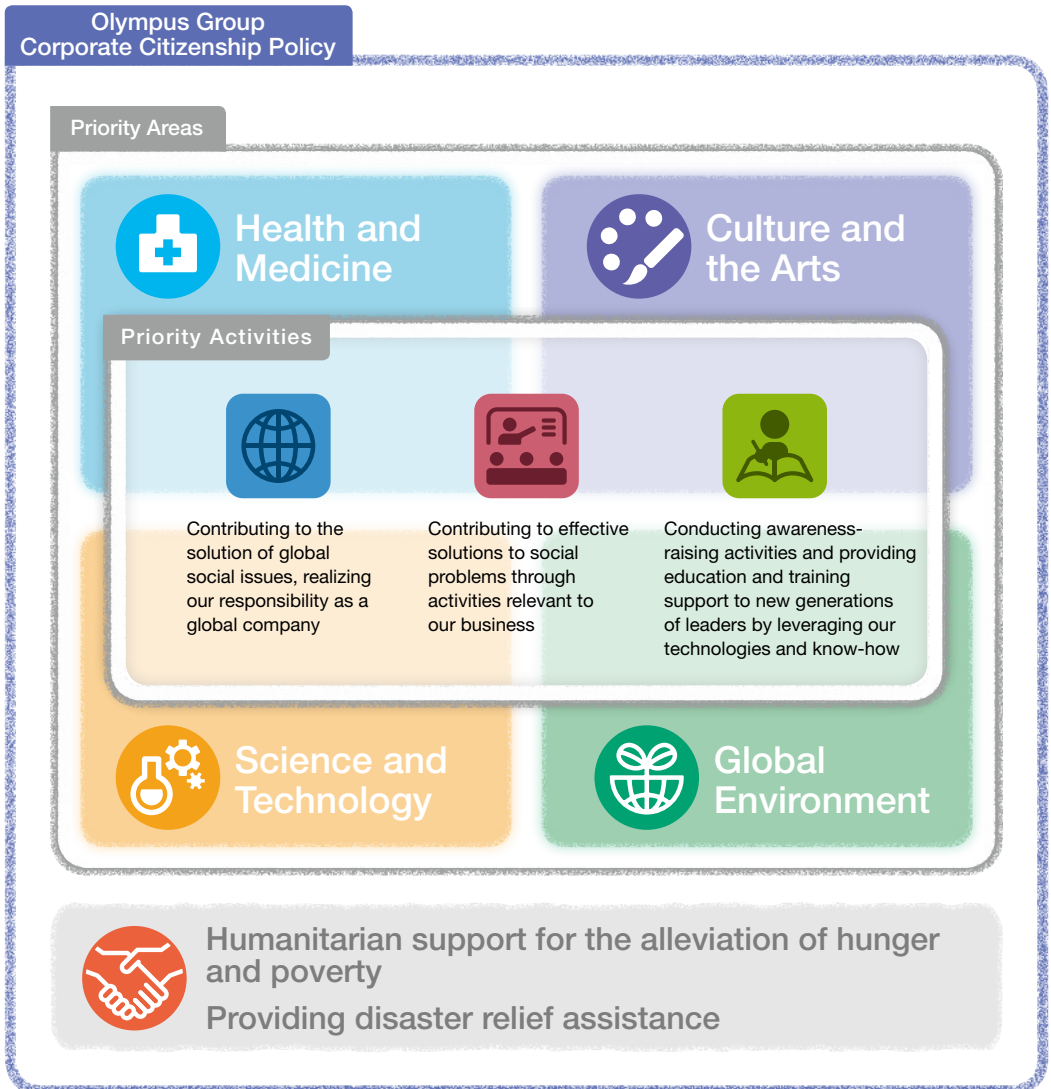
President and Representative Director

Olympus Corporate Citizenship Activities

Olympus contributes to society through its corporate citizenship activities that utilize technologies and expertise gained in its Medical, Scientific Solutions and Imaging Businesses.

Our corporate citizenship activities are being conducted in accordance with the Olympus Group Corporate Citizenship Policy. In the Policy, we set four priority areas and three priority activities, and we are committed to providing disaster relief assistance and humanitarian support.

Corporate citizenship activities that are uniquely Olympus are underway around the world, based on these policy directions.



Olympus Corporate Citizenship Activities around the World

Priority Areas



From Japan



Tree-planting in Shirakami-Sanchi, a World Heritage site.

▶ See Page 17 for further information.



Aid in recovery from earthquake disaster and in supporting young people

▶ See Page 10 for further information.



Coral planting in the oceans around Okinawa

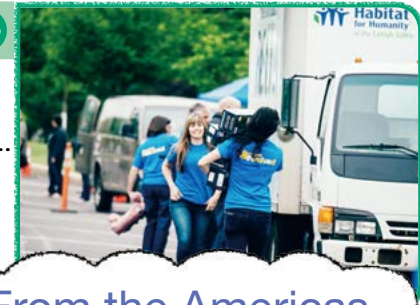
▶ See Page 17 for further information.



From the Americas

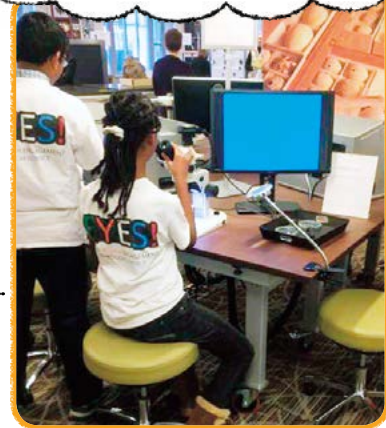
Stuff-a-Truck turns unused items from employees into donations.

▶ See Page 14 for further information.



Donation of microscopes to the Smithsonian Museum

▶ See Page 13 for further information.



Promoting environment-friendly bike commuting

▶ See Page 14 for further information.



From Europe



Project to provide medical treatment to persons without health insurance coverage

▶ See Page 7 for further information.

From Asia/Oceania



Promoting better gastrointestinal health

▶ See Page 7 for further information.



Cultural contribution activities in the exhibition hall

▶ See Page 11 for further information.