

Gastrointestinal Solutions Division



Frank Drewalowski
Executive Officer and
Gastrointestinal Solutions

Hironobu Kawano
Gastrointestinal Solutions
Division Head

Keith Boettiger
Gastrointestinal Solutions
Division Head

GI Endoscopy

The GI endoscope is inserted into the digestive organs through natural orifices (mouth, nose and anus) for observation, diagnosis, staging, and treatment of benign and malignant diseases.

GI EndoTherapy

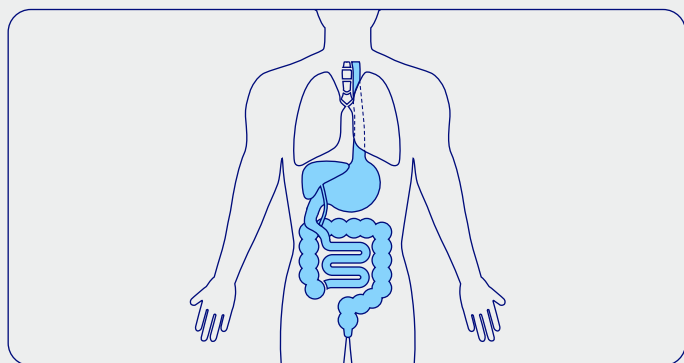
Miniaturized catheter-based devices that can be inserted into the working channel of flexible endoscopes and used to accomplish various diagnostic and therapeutic interventions (tissue sampling, stenting, anastomosis, and hemostasis)

Medical Service

General repairs and service contracts for endoscopy system

Main Diseases

- Esophagus: Reflux disease, Barrett's esophagus, cancer
- Stomach: Ulcers, cancer
- Small bowel: GI bleeding
- Hepato-pancreato-biliary disease
- Colon: Cancer, benign polyps, inflammation, diverticulosis



> General repairs

- Repair services through repair bases worldwide
- Repair services at facilities through field services (stationary equipment such as reproprocessors)

> Service contracts

- Single-year or multi-year contracts
- Partial or complete repair cost coverage
- Priority provision of loaners during repair of defective products
- Provision of failure prevention training
- Provision of comprehensive support for customers' uptime



Repair center

Focus Area

Endoscopy Solutions Ecosystem (ESE)*1

ESE drives the implementation of the Intelligent Endoscopy Ecosystem and delivers digital health solutions that enhance clinical and operational workflows for GI and surgical procedures.

Intelligent Endoscopy Ecosystem (Page 34)

> Intelligent Endoscopy Ecosystem



OLYSENSE*2 Hub

AI-powered software platform that integrates with hospital systems and leverages contextual data to support enhanced clinical, administrative, safety, and quality control

> CAD/AI detection and characterization



*1 For disclosure purposes, financial results of Endoscopy Solutions Ecosystem are classified as "GI Endoscopy."

*2 OLYSENSE is a trademark of Olympus Corporation and/or its affiliated entities. All trademarks, logos and brand names are the property of their respective owners.

Surgical and Interventional Solutions Division



Seiji Kuramoto
Executive Officer and
Surgical and Interventional Solutions

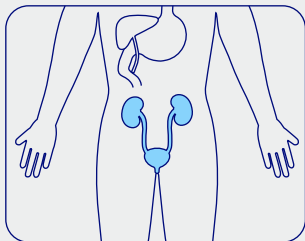
Gabriel McHugh
Surgical and Interventional Solutions
Division Head

Urology

Endoscopic evaluation of the genitourinary tract for diagnosis, staging, surveillance, and treatment of benign and malignant diseases

Main Diseases

- Benign prostate hyperplasia (BPH)
- Urinary stones
- Bladder cancer

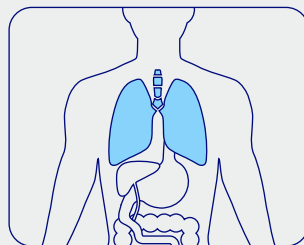


Respiratory

Endoscopic evaluation of the tracheobronchial tree for observation, diagnosis, staging, and treatment of benign and malignant diseases

Main Diseases

- Lung cancer
- Benign pulmonary disease (COPD)

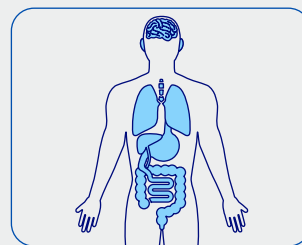


Surgical Endoscopy

The surgical endoscope is inserted through a small hole into body cavities (abdomen and thorax) for laparoscopic surgical procedures. Exoscopes offer 4K and 3D visualization for neurosurgery and ENT procedures.

Main Diseases

- Gastrointestinal cancer
- Hernias
- Appendicitis
- Obesity
- Liver & pancreatic tumors
- Cranial tumors & bleeding
- Prostate cancer
- Cholesteatoma
- Gallstones
- Reflux disease
- Lung cancer



Other Therapeutic Areas

ENT

Endoscopic evaluation of the nasal cavity, oral cavity, pharynx, larynx, and ears for the diagnosis, staging, and treatment of benign and malignant diseases

Main Diseases

- Ear: Otitis media
- Nose: Nasal obstruction
- Throat: Laryngeal cancer, pharyngeal cancer, oral cancer, voice disorders

Surgical Devices

Enabling laparoscopic and open surgical procedures by providing tissue grasping, manipulation, dissection, coagulation, and vascular control

Main Diseases

- Stomach cancer
- Obesity
- Colorectal cancer
- Liver cancer
- Pancreatic cancer
- Gallstone and gallbladder disease
- Appendicitis
- Hernia
- Prostate cancer
- Lung cancer
- Uterine cancer and cervical cancer
- Uterine fibroids
- Thyroid cancer