

Intelligent Endoscopy Ecosystem

Unlocking the Power of Intelligent Endoscopy

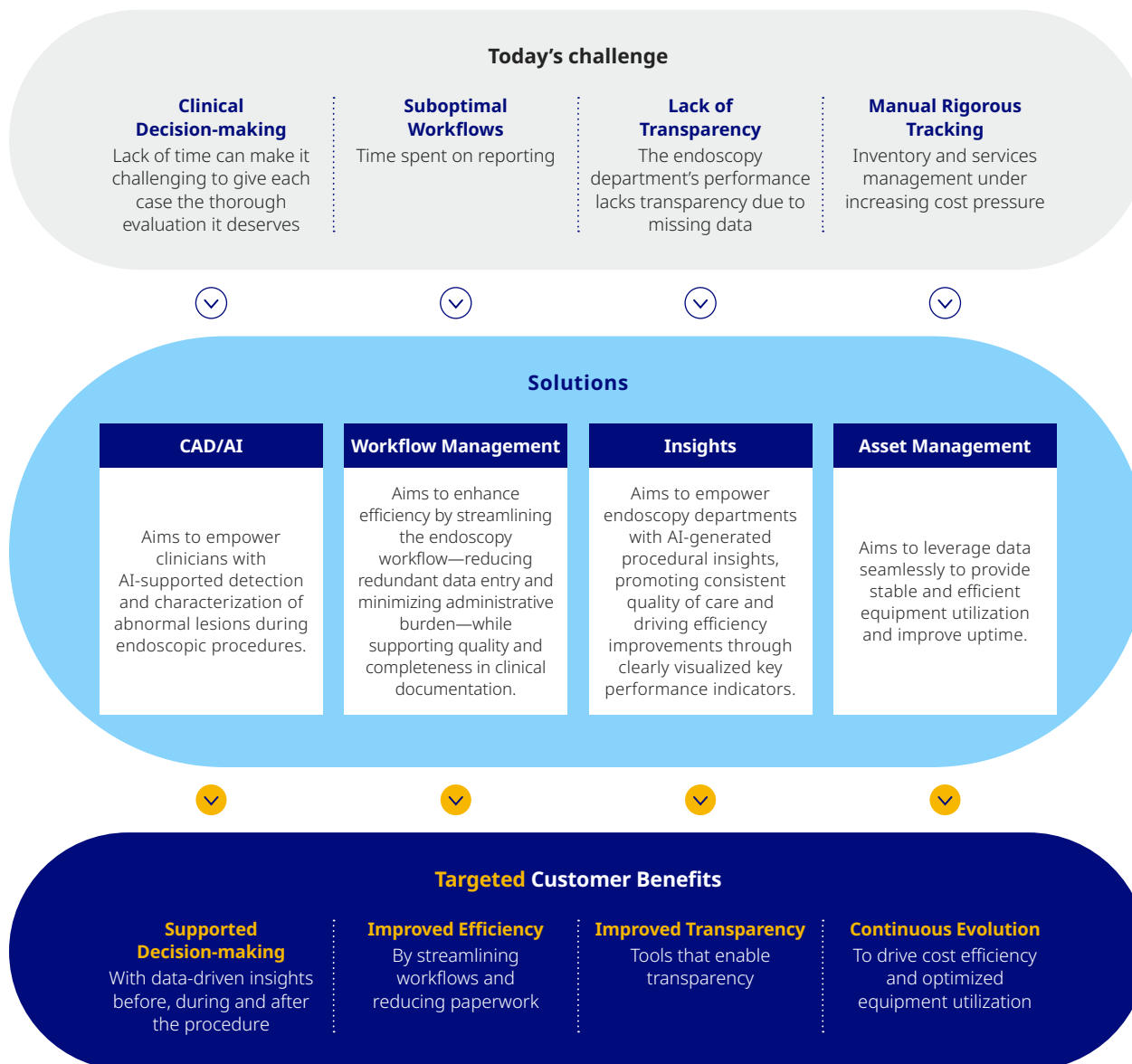
The growing prevalence of chronic diseases and aging populations is driving the urgent need for better patient outcomes and experiences—delivered at lower costs.

We see a significant opportunity to advance endoscopy to make it “intelligent” by leveraging digitalization and automation. Through AI-powered data and connectivity, we can generate actionable insights that address both clinical and operational challenges.

Our vision is to build a state-of-the-art intelligent endoscopy ecosystem at the core of our GI endoscopy offerings. This intelligent endoscopy ecosystem will meet current and future clinical needs while empowering clinicians and healthcare administrators to elevate standards of care. By integrating the latest technologies, including AI, it will deliver insights across the entire care pathway—enabling more efficient workflows and optimal outcomes for Olympus customers.

We aim to shift our solutions from a “hardware only” business model, which relies on longer upgrade cycles, to a model where continuous software enhancements can deliver “always-on” innovation. This model works through cloud-based, automatic upgrades and on-demand apps on the Olympus Endosuites.

Our Vision



OLYSENSE

OLYSENSE

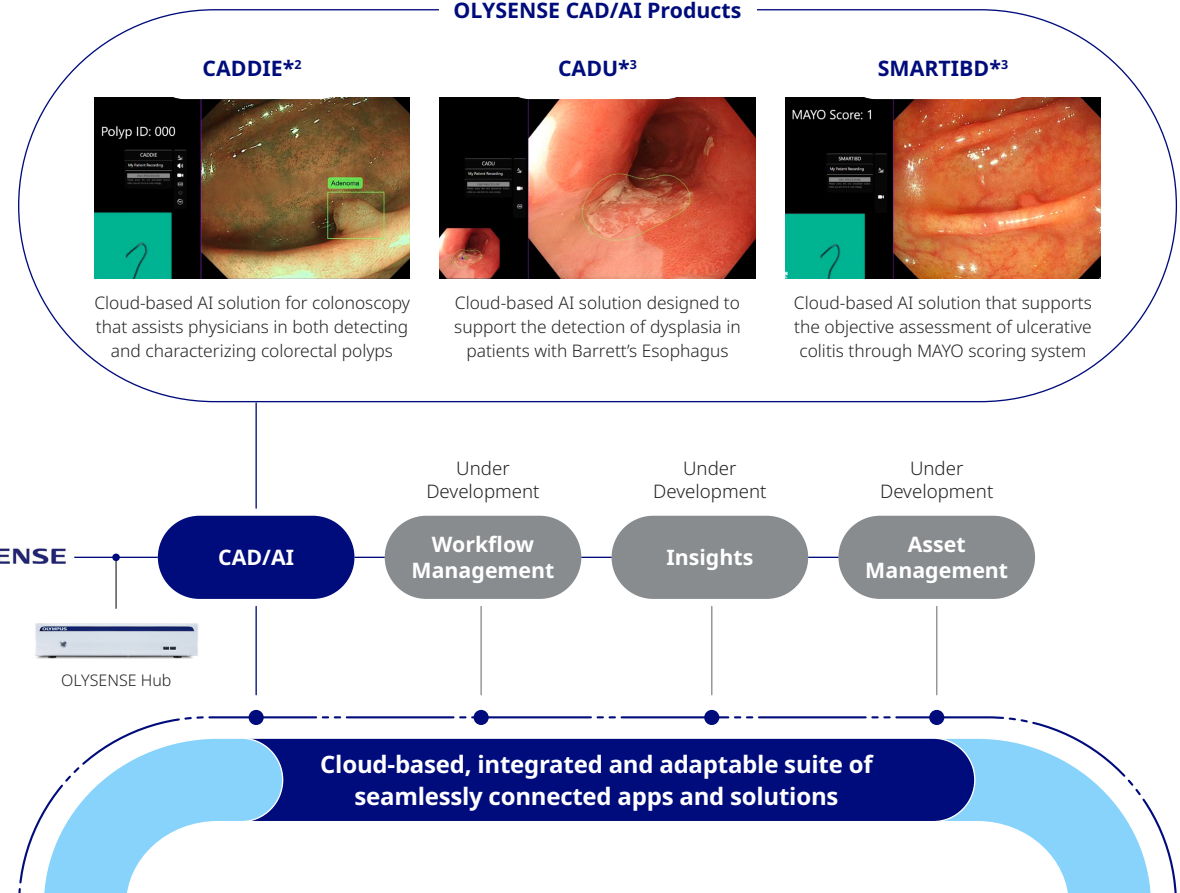
OLYSENSE*¹—our cloud-based, integrated, and scalable suite of apps and solutions, is designed to enhance clinical and operational outcomes. The first apps, aim to support clinicians detect, characterize, and analyze lesions throughout the upper and lower GI tract.

These apps have been implemented as a pilot in selected U.S. and EU hospitals, have received positive feedback at Digestive Disease Week (DDW) and European Society of Gastrointestinal Endoscopy (ESGE) Days.

We anticipate strong long-term potential, enhancing customer engagement, recurring revenue, and market share. The phased rollout of OLYSENSE CAD/AI begins in the second half of fiscal year 2026 with a subscription model in the U.S. and select EU countries.

Commercialization to start from FY2026 2H	U.S.	EU
OLYSENSE Hub and select CAD/AI products	☑	☑
CADDIE*² medical device software Cloud-based AI app for colonoscopy that assists physicians in both detecting and characterizing colorectal polyps	☑	☑
CADU medical device software Cloud-based AI app designed to support the detection of dysplasia in patients with Barrett's Esophagus		☑
SMARTIBD medical device software Cloud-based AI app that supports the objective assessment of ulcerative colitis through MAYO scoring system		☑

OLYSENSE CAD/AI Products



*¹ OLYSENSE is a trademark of Olympus Corporation and/or its affiliated entities. All trademarks, logos and brand names are the property of their respective owners.

*² EU MDR approval and U.S. FDA clearance. In the U.S., CADDIE has been cleared only for assisting in detecting suspected colorectal polyps. CADDIE includes a Cecum AI function as a convenience feature that provides a check to the user that the CADDIE polyp detection function is on and in use. In Europe, CADDIE is approved for assisting in detecting and characterizing suspected colorectal polyps including the Cecum AI and Visible Mucosa AI functions as convenience features.

*³ EU MDR approval