

# Innovation

## Basic Policy

### Olympus CTO Vision

"Olympus is a global leader in high-tech, minimally invasive healthcare, driven by growth mindset and meaningful innovation."



**Syed Naveed**

Executive Officer and Chief  
Technology Officer

### The Key Pillars of CTO Vision

<b>Global Excellence</b>	Establishing a world-class organization with leading capabilities in core technology areas
<b>High-Tech</b>	Advancing AI, software-defined architectures, and digital ecosystems to drive the next generation of minimally invasive healthcare solutions
<b>Meaningful Innovation</b>	Strengthening our collaboration with business units and Healthcare Professionals to bring impactful solutions to market with Patient Safety & Quality in mind
<b>Growth Mindset</b>	Fostering curiosity, continuous learning, and adaptability to stay ahead in the industry

### Missions to Achieve Our Vision

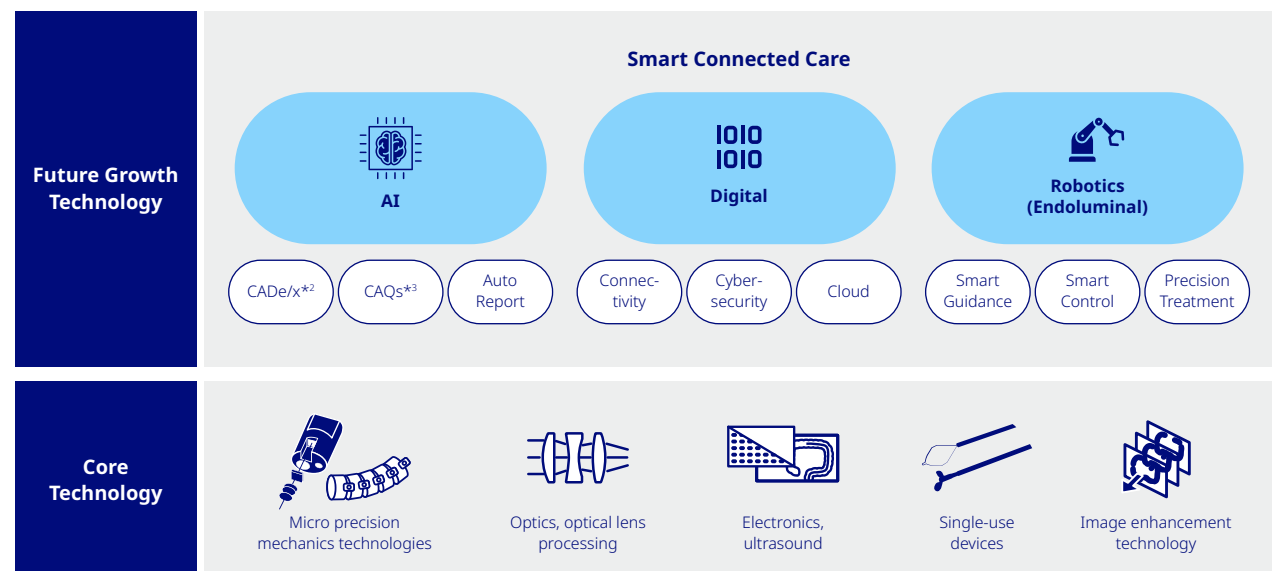
- Drive Transformational Innovation
- Enhance New Product Development and Sustaining\*<sup>1</sup> Execution to Accelerate Product Launches and Optimize Resources
- Enhance Productivity & Speed
- Optimize Global R&D Footprint
- Enhance and Re-skill Critical Capabilities
- Foster a Healthy Organization

\*<sup>1</sup> Maintaining and improving the quality of existing products

## Olympus R&D Strategy

<b>Patient-/Customer-driven Innovation</b> <p>Promote "efficient and highly effective innovation activities" driven by the patients and customer needs.</p> <p>The newly introduced innovation process and governance are designed based on the principles of Biodesign.</p>	<b>Strategic Partnerships</b> <p>A new function, Smart Connected Care, has been created to leverage the possibilities offered by medical robotics and digital technology.</p> <p>Pro-actively seek for strategic partnerships through joint venture, early-stage investments, M&amp;As and co-creation.</p>
<b>Efficient and Capable R&amp;D Organization</b> <p>Become more efficient and predictable in project execution, fully leveraging our global resources, and enhance future growth capabilities and capacity.</p>	<b>Right Investment</b> <p>To achieve long-term growth, we will strategically balance our investments between next-generation product development and longer-term innovation.</p>

## Olympus Technology Expertise



\*<sup>2</sup> CADe: Computer Aided Detection; CADx: Computer Aided Diagnosis

\*<sup>3</sup> Computer Aided Quality

## Progress Achievements of Smart Connected Care

We aim to create new value in the medical field by integrating our long-standing expertise in endoscopic technology with digital innovations and artificial intelligence (AI). Below, we present the progress of our initiatives toward delivering new solutions.

### OLYSENSE

OLYSENSE (Page 35)

We have received U.S. FDA clearance and EU MDR approval for CAD/AI software applications<sup>\*1, 2</sup>, which are designed to detect, characterize, and analyze lesions in the upper and lower GI tracts, marking the first major milestone toward the launch of OLYSENSE<sup>\*3</sup>.

### Realizing World's First Cloud Endoscopy System

This is an innovative initiative shaping the future of Olympus' endoscopy business by utilizing Olympus' advanced endoscopic technologies—developed over many years—and NTT's IOWN APN, a high-speed, low-latency network technology, to enable real-time image processing on a remote cloud server, rather than within the endoscope device itself. It is expected to provide new customer value, including delivering the latest functions in shorter cycles and enabling real-time remote diagnosis and treatment through the sharing of image information among multiple hospitals.

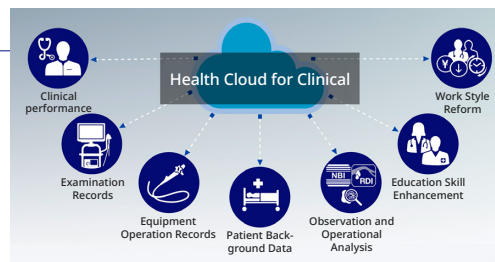


Result of the Long-Distance (approx. 150 km) Demonstration Experiment Using the APN

### First Cloud-based Data Analytics Solution for Hospitals

During endoscopy, images of the inside of the body observed by the endoscope and examination information are recorded for each patient. In addition, physicians accumulate a great deal of data on the site and size of lesions and diagnostic information, which is used for medical research and conference presentation materials.

"Health Cloud for Clinical" is a recording and data management of various information generated during endoscopic examinations. It easily tabulates and graphs the operation logs (time of imaging and function usage) recorded in the endoscopy equipment during examinations. Cloud-based data analysis solution for hospitals that enables efficient.



Aggregating extensive endoscopic data (such as the number of treatments and diagnoses of malignant diseases) and visualizing to provide feedback

## Strategic Partnerships

<b>Sony Olympus Medical Solutions</b>	Established as a joint venture
<b>Canon Medical Systems</b>	Business alliance on endoscopic ultrasound systems
<b>NTT</b>	World's first demonstration of a cloud endoscopy system
<b>HCLTech</b>	Establishment of R&D Offshore Development Center (ODC) in Hyderabad, India
<b>Swan EndoSurgical</b>	Investment in a joint venture for development of endoluminal robots

### Latest Products Introduced through Collaboration



**Surgical Endoscopy**  
VISERA ELITE III, an endoscopic system for surgery



**GI Endoscopy**  
Aplio i800 EUS ultrasound diagnostic equipment

<sup>\*1</sup> This includes information on products and devices that may contain technologies not approved or not yet available in certain regions, including those not approved under the Medical Device and related laws.

<sup>\*2</sup> In the U.S., CADDIE has been cleared only for assisting in detecting suspected colorectal polyps. CADDIE includes a Cecum AI function as a convenience feature that provides a check to the user that the CADDIE polyp detection function is on and in use. In Europe, CADDIE is approved for assisting in detecting and characterizing suspected colorectal polyps including the Cecum AI and Visible Mucosa AI functions as convenience features.

<sup>\*3</sup> OLYSENSE is a trademark of Olympus Corporation and/or its affiliated entities. All trademarks, logos and brand names are the property of their respective owners.