

August 4, 2020

**Compact, Lightweight Super Telephoto Zoom Lens**  
**M.Zuiko Digital ED 100-400mm F5.0-6.3 IS**  
 (35mm equivalent: 200-800mm)

Olympus Corporation (President: Yasuo Takeuchi) is pleased to announce the M.Zuiko Digital ED 100-400mm F5.0-6.3 IS, scheduled to go on sale on September 11, 2020. This compact, lightweight super telephoto zoom lens covers a wide focal length of 200-800mm equivalent<sup>1</sup> and is compliant with the Micro Four Thirds System standard. This lens features the same dustproof and splashproof performance as the M.Zuiko PRO lens series, and when paired with the M.Zuiko Digital 2x Teleconverter MC-20, delivers up to 1600mm equivalent<sup>1</sup> super telephoto shooting in any environment.

▪ **Sales Outline**

Product Name	MSRP	Launch Date
M.Zuiko Digital ED 100-400mm F5.0-6.3 IS	180,000 yen (198,000 yen incl. tax)	September 11, 2020

▪ **Main Features**

1. Compact, lightweight, super telephoto zoom lens capable of shooting up to 1600mm equivalent<sup>1</sup> when paired with the optional 2x teleconverter
2. Optical design that delivers superb depictive performance across the entire zoom range and reliable dustproof and splashproof performance
3. Comfortable AF even at super telephoto range and in-lens image stabilization



M.Zuiko Digital ED 100-400mm F5.0-6.3 IS

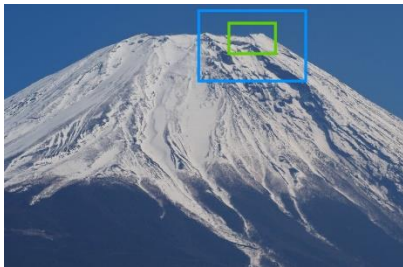


Attached to OM-D E-M1 Mark III

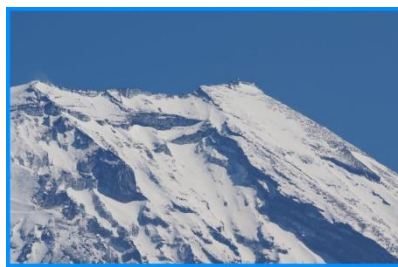
## ▪ Main Feature Details

1. Compact, lightweight, super telephoto zoom lens capable of shooting up to 1600mm equivalent when paired with the optional 2x teleconverter

The M.Zuiko Digital ED 100-400mm F5.0-6.3 IS is capable of 200-800mm equivalent<sup>1</sup> telephoto shooting on its own, which can be further extended when paired with the optional M.Zuiko Digital 1.4x Teleconverter MC-14 or the M.Zuiko Digital 2x Teleconverter MC-20, for up to 1600mm equivalent<sup>1</sup> super telephoto shooting, making it possible to zoom in close on subjects that are difficult to approach, such as birds, and delivering flattening effects for shooting that is unique to a super telephoto lens. The closest focusing distance across the entire zoom range is 1.3 m and the maximum image magnification is 0.57x<sup>1</sup> for superb telemacro performance when photographing small subjects such as insects and flowers. Focus Stacking<sup>2</sup> is also supported. This feature captures multiple shots at different focal positions and automatically composites a single photo with a large depth of field that is in focus from the foreground to background.



Focal length: 200mm equivalent<sup>1</sup>



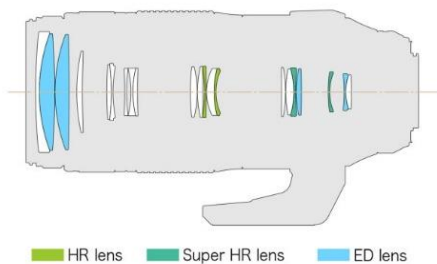
800mm equivalent<sup>1</sup>



1600mm equivalent<sup>1</sup>

2. Optical design that delivers superb depictive performance across the entire zoom range and reliable dustproof and splashproof performance

The optical system features a combination of four ED lenses<sup>3</sup> for suppressing color bleeding, two Super HR lenses<sup>4</sup>, and two HR lenses<sup>5</sup> for bright, clear depictive performance to the edges of the image across the entire zoom range. ZERO (Zuiko Extra-low Reflection Optical) Coating is also used to reduce ghosts and flares for clear image quality even in poor conditions such as backlit scenes. Also, extensive hermetic sealing on the entire lens barrel delivers the same high level of dustproof and splashproof performance as the M.Zuiko PRO series for peace of mind when shooting in any environment.



Lens construction diagram



Sealing construction image

### 3. Comfortable AF even at super telephoto range and in-lens image stabilization

A rear focus system is employed to drive the lightweight focusing lens for fast, high-precision AF performance. This lens is also equipped with a Focus Limit switch for AF operation selection, ranging between three levels according to the focusing distance, allowing for quick focusing and comfortable shooting, even in the super telephoto range. Also, in-lens image stabilization delivers stable handheld super telephoto shooting.

#### ▪ Other Features

- Despite being a 200-800mm equivalent super telephoto zoom lens, it has a compact, lightweight design with a length of 205.7 mm, a weight of 1,120 g<sup>6</sup> and a filter diameter of 72 mm.

#### ▪ Separately Available Accessories

Lens Hood, LH-76D (Bundled)

This lens hood can be attached to the M.Zuiko Digital ED 100-400mm F5.0-6.3 IS and M.Zuiko Digital ED 40-150mm F2.8 PRO.

MSRP: 4,000 yen (4,400 yen incl. tax), Launch date: September 11, 2020



Lens Hood, LH-76D

#### ▪ M.Zuiko Digital ED 100-400mm F5.0-6.3 IS specifications

Please see the Olympus website for detailed product specifications.

[https://asia.olympus-imaging.com/product/dslr/mlens/100-400\\_50-63is/spec.html](https://asia.olympus-imaging.com/product/dslr/mlens/100-400_50-63is/spec.html)

Company names and product names contained in this release are trademarks or registered trademarks of their respective companies.

---

<sup>1</sup> 35mm equivalent

<sup>2</sup> Please see the Olympus website for compatible cameras

<sup>3</sup> Extra-low Dispersion lens

<sup>4</sup> Super High Refractive Index lens

<sup>5</sup> High Refractive Index lens

<sup>6</sup> Excluding tripod base plate, lens cap, lens rear cap, and lens hood